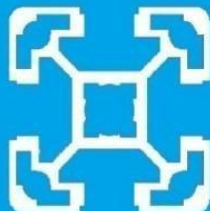
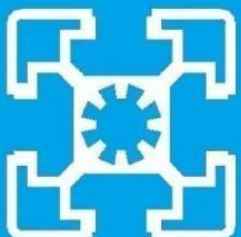
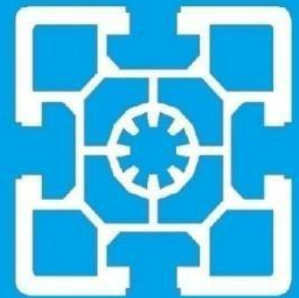
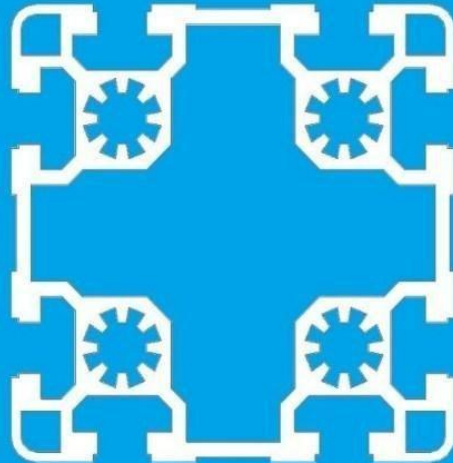
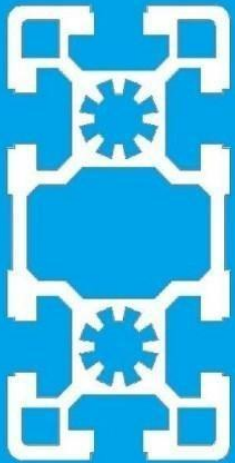


K+V
AUTOMATIKA KFT

BOSCH-KOMPATIBLE ALUMINIUMPROFILE




BOSCH COMPATIBLE ALUMINIUM PROFILES



Bosch-kompatible Profile

Bosch compatible Profiles

Rastermaß R [mm]
 Grid dimension R [mm]

20	30	40, 45, 50, 60
		
Nut 6	Nut 8	Nut 10

Technische Daten der Automatisierungsprofile

Technical data for the aluminium automation profiles

EN AW – 6063 T6	Werkstoffbezeichnung nach DIN EN 573 <i>Material designation according to DIN EN 573</i>
Rm	245 N/mm ² Mindestzugfestigkeit <i>Minimum tensile strength Rm</i>
Rp 0,2	195 N/mm ² Dehnungsgrenze <i>Proof stress in direction of pressure</i>
A5	10 % Bruchdehnung <i>Ductile yield</i>
A10	8 % Bruchdehnung <i>Ductile yield</i>
E	ca. 70.000 N/mm ² Elastizitätsmodul <i>approx. 70.000 N/mm² Modulus of elasticity</i>
HB	ca. 75 Brinellhärte <i>approx. 75 Brinell hardness</i>
α	23,4 x 10 ⁻⁶ 1/K Längenausdehnungskoeffizient <i>Longitudinal expansion coefficient</i>
Toleranzen <i>Tolerances</i>	DIN EN 12020-2
Eloxal <i>Anodizing process</i>	E6 CO
Schichtdicke <i>Thickness of layer</i>	10 - 15µm

Metric / US / Conversion Chart

Measurement	<i>Multiply</i>	<i>by</i>	<i>to get</i>
Linear	millimeters (mm)	0.03937	inches
	inches	25.4	millimeters (mm)
	meters	3.2808	feet
	feet	0.3048	meters
Area	centimeters ² (cm ²)	0.155	inches ²
	inches ²	6.4516	centimeters ² (cm ²)
Mass	kilogramm (kg)	2.2046	pounds
	pounds	0.4536	kilogram (kg)
Moment of inertia	centimeters ⁴ (cm ⁴)	0.02403	inches
	inches	41.623	centimeters ⁴ (cm ⁴)
Moment of resistance	centimeters ³ (cm ³)	0.06102	inches ³
	inches ³	16.387	centimeters ³ (cm ³)

Profil-Nut Belastbarkeit der Automatisierungsprofile

Profile-slot loading capacity of the aluminium automation profiles

Zugbelastung / *Tensile loading*

Statische Zugbelastung-Grenzwerte der Profil-Nut (Beginn von an der Profil-Außenfläche sichtbarer bleibender plastischer Verformung) bei Verbindern mit jeweils größtem Gewinde:

Static tensile loading capacity limit of the profile-slot (beginning of visible permanent plastic deformation on the outer surface of the profile) each for connectors with the biggest thread-diameter:

Nut/Slot	Profil/Profile	Hammerschraube/Hammer-head screw	Hammermutter/Hammer-head nut	Zentralschraube/Central-screw	Nutenstein einschwenkbar/Roll-In-T-Slot nut	Nutenstein/T-Slot nut
6	Profile 6 20x20	1700 N	1700 N	2000 N	2500 N	3000 N
	Profile 6 20x20 R					
	Profile 6 20x40					
8	Profile 8 30x30	4000 N	4000 N	5000 N	6000 N	6300 N
	Profile 8 30x60					
	Profile 8 30x60x60					
	Profile 8 30x45					
	Profile 8 30 R45					
	Profile 8 30 R60					
	Profile 8 30x30 R					
	Profile 8 11x20					
10	Profile 10 40x40L	7000 N	7200 N	10000 N	12000 N	12500 N
	Profile 10 40x80L					
	Profile 10 40x40x80L					
	Profile 10 40x120L					
	Profile 10 40x160L					
	Profile 10 80x80L					
	Profile 10 80x120L					
	Profile 10 80x160L					
Profile 10 40x40L R						
10	Profile 10 45x45L	7000 N	7000 N	10000 N	10000 N	12500 N
	Profile 10 45x90L					
	Profile 10 45x90x90L					
	Profile 10 45 R30					
	Profile 10 45 R45					
	Profile 10 45 R60					
	Profile 10 45x45L R					
	Profile 10 50x50L					
	Profile 10 50x100L					
	Profile 10 100x100L					
	Profile 10 60x60L					
10	Profile 10 45x45	12000 N	12000 N	15000 N	13000 N	17000 N
	Profile 10 45x90					
	Profile 10 45x180					
	Profile 10 45x180L					
	Profile 10 45x60					
	Profile 10 90x90L					
	Profile 10 90x180L					
	Profile 10 22,5x180					
Profile 10 60x60						
10	Profile 10 60x90	18000 N	18000 N	22000 N	18000 N	24000 N
	Profile 10 90x90					
	Profile 10 90x180					

Alle angegebenen Werte wurden exemplarisch durch physische Ausreißversuche ermittelt.
Sicherheitsfaktoren wurden nicht berücksichtigt!
Gesetzliche Vorschriften und entsprechende Regeln der Technik sind gesondert zu berücksichtigen!

*All values have been determined exemplarily by physical pull-out experiments.
Safety factors have not been applied.
All values are ultimate values and the appropriate safety factors have to be applied.*

Technische Daten

Technical Data

Nut / Slot	Profil / Profile	Trägheitsmoment / Moment of inertia		Widerstandsmoment / Section modulus		Masse / Mass G (kg/m)	Profilfläche / Profile surface A (cm ²)	Seite / Page
		I _x (cm ⁴)	I _y (cm ⁴)	W _x (cm ³)	W _y (cm ³)			
6	Profile 6 20x20	0,68	0,68	0,68	0,68	0,44	1,64	8
6	Profile 6 20x20 3N	0,75	0,67	0,71	0,67	0,46	1,72	8
6	Profile 6 20x20 2NVS	0,76	0,76	0,72	0,72	0,49	1,83	8
6	Profile 6 20x20 2N	0,68	0,84	0,68	0,84	0,49	1,83	8
6	Profile 6 20x20 R	0,58	0,58	0,55	0,55	0,44	1,62	9
6	Profile 6 20x40	4,61	1,20	2,31	1,20	0,77	2,87	9
6	Profile 6 40x40	2,00	2,00	4,05	4,05	1,25	4,62	9
6	Profile 6 10x40	3,26	0,21	1,63	0,40	0,57	2,13	9
8	Profile 8 30x30	2,77	2,77	1,85	1,85	0,85	3,14	10
8	Profile 8 30x30 3N	3,10	2,78	1,97	1,85	0,90	3,32	10
8	Profile 8 30x30 2NVS	3,11	3,11	1,98	1,98	0,95	3,50	10
8	Profile 8 30x30 2N	3,48	2,79	2,32	1,86	0,95	3,51	10
8	Profile 8 30x30 1N	3,12	3,49	1,99	2,32	1,00	3,69	11
8	Profile 8 30x60	19,66	5,09	6,55	3,39	1,49	5,53	11
8	Profile 8 30x60 4N	20,44	5,75	6,81	3,62	1,58	5,88	11
8	Profile 8 30x60x60	26,21	26,21	7,57	7,57	2,22	8,22	11
8	Profile 8 60x60	39,70	39,70	13,23	13,23	2,64	9,78	12
8	Profile 8 30x90	61,43	7,41	13,65	4,94	2,14	7,92	12
8	Profile 8 30x120	136,14	9,69	22,69	6,46	2,68	9,94	12
8	Profile 8 30x45	8,16	3,98	3,63	2,62	1,09	4,05	12
8	Profile 8 30 R45	3,70	5,29	2,13	2,37	1,11	4,12	13
8	Profile 8 30 R60	4,24	3,12	1,95	1,77	1,01	3,73	13
8	Profile 8 30x30 R	2,28	2,28	1,41	1,41	0,78	2,88	13
8	Profile 8 11x20	0,13	0,52	0,20	0,52	0,28	1,02	13
10	Profile 10 40x40L	9,06	9,06	4,53	4,53	1,51	5,61	14
10	Profile 10 40x40L 1N	10,38	9,73	5,19	4,73	1,65	6,13	14
10	Profile 10 40x40L 3N	9,69	9,08	4,71	4,54	1,56	5,79	14
10	Profile 10 40x40L 2NVS	9,71	9,71	4,72	4,72	1,61	5,96	14
10	Profile 10 40x40L 2N	10,36	9,10	5,18	4,55	1,61	5,96	15
10	Profile 10 40x80L	63,24	17,23	15,81	8,61	2,66	9,86	15
10	Profile 10 40x80L 4N	66,01	19,10	16,50	9,16	2,81	10,43	15
10	Profile 10 40x80L 3NVS	68,60	19,10	16,88	9,17	2,86	10,61	15
10	Profile 10 40x80L 2N	67,44	20,91	16,86	10,46	2,94	10,90	16
10	Profile 10 40x80x80L	91,52	91,52	19,89	19,89	4,17	15,43	16
10	Profile 10 40x120L	201,95	27,76	33,66	13,88	4,14	15,35	16
10	Profile 10 40x120x120L	315,24	315,24	41,84	41,84	6,65	24,64	16
10	Profile 10 40x160L	479,63	37,91	59,95	18,95	5,71	21,18	17
10	Profile 10 80x80L	132,62	132,62	33,16	33,16	4,98	18,45	17
10	Profile 10 80x80L 6N	141,45	134,90	34,37	33,72	5,17	19,17	17
10	Profile 10 80x80L 4NVS	143,30	143,30	34,80	34,80	5,33	19,74	17
10	Profile 10 80x120L	394,72	194,68	65,78	48,67	7,12	26,39	18
10	Profile 10 80x160L	867,52	256,30	108,44	64,07	9,22	34,17	18
10	Profile 10 40x40L R	6,84	6,84	3,06	3,06	1,28	4,75	18
10	Profile 10 45x45L	11,00	11,00	4,89	4,89	1,55	5,73	19
10	Profile 10 45x45	13,94	13,94	6,19	6,19	2,03	7,50	19
10	Profile 10 45x45L 3N	11,65	10,87	5,03	4,83	1,57	5,83	19
10	Profile 10 45x45L 2NVS	11,82	11,82	5,11	5,11	1,64	6,08	19
10	Profile 10 45x45L 2N	11,04	12,66	4,91	5,63	1,64	6,08	20

Technische Daten

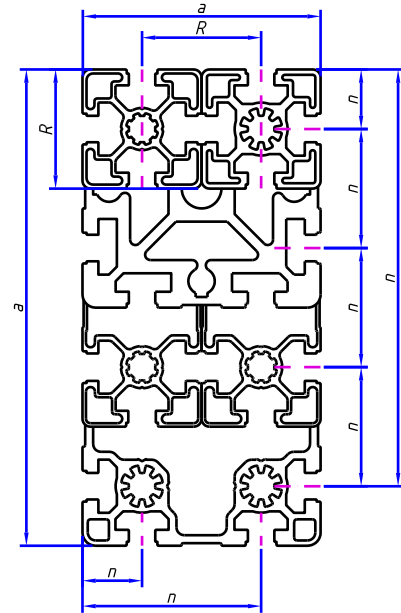
Technical Data

Nut / Slot	Profil / Profile	Trägheitsmoment / Moment of inertia		Widerstandsmoment / Section modulus		Masse / Mass	Profilfläche / Profile surface	Seite / Page
		I _x (cm ⁴)	I _y (cm ⁴)	W _x (cm ³)	W _y (cm ³)	G (kg/m)	A (cm ²)	
10	Profile 10 45x45L 1N	11,84	12,68	5,13	5,64	1,69	6,25	20
10	Profile 10 45x90L	81,82	23,53	18,18	10,46	3,05	11,29	20
10	Profile 10 45x90	124,05	32,25	27,57	14,33	4,11	15,24	20
10	Profile 10 45x90L 2N	85,89	26,90	19,09	11,96	3,25	12,03	21
10	Profile 10 45x90x90L	151,95	151,95	29,34	29,34	5,67	21,01	21
10	Profile 10 45x90x90L 4NVS D	160,98	160,98	30,67	30,67	5,94	22,01	21
10	Profile 10 45x90L D	80,82	23,27	17,96	10,34	2,88	10,66	21
10	Profile 10 45x90L 4N D	82,60	24,84	18,36	10,72	2,97	11,01	22
10	Profile 10 45x90L 2NVS D	85,90	24,86	18,81	10,73	3,02	11,18	22
10	Profile 10 45x90 D	124,19	34,74	27,60	15,44	4,26	5,77	22
10	Profile 10 45x60	37,55	22,66	12,52	10,07	3,01	11,14	22
10	Profile 10 45x180	771,07	57,77	85,67	25,68	6,96	25,79	23
10	Profile 10 90x90L	210,50	210,50	46,78	46,78	6,34	23,46	23
10	Profile 10 90x90L 4NVS	220,15	220,15	48,06	48,06	6,49	24,03	23
10	Profile 10 90x90L 6N	217,87	211,76	47,55	47,06	6,37	23,60	23
10	Profile 10 90x90	301,80	301,80	67,06	67,06	10,51	38,93	24
10	Profile 10 90x180L	1375,79	398,30	152,86	88,51	11,42	42,29	24
10	Profile 10 90x180	2142,81	547,41	238,10	121,64	17,16	63,57	24
10	Profile 10 22,5x180	581,99	11,79	64,67	10,24	5,80	21,48	24
10	Profile 10 22,5x45	6,81	2,84	3,03	2,53	1,22	4,51	25
10	Profile 10 15x22,5	0,33	0,81	0,40	0,72	0,33	1,21	25
10	Profile 10 45 R30	15,18	12,72	5,34	5,04	1,86	6,89	25
10	Profile 10 45 R45	21,09	13,32	6,30	5,19	2,00	7,41	25
10	Profile 10 45 R60	11,40	16,94	4,38	5,19	1,83	6,78	26
10	Profile 10 45x45L R	8,01	8,01	3,20	3,20	1,27	4,70	26
10	Profile 10 50x50L	21,68	21,68	8,67	8,67	2,57	9,52	27
10	Profile 10 50x100L	165,70	42,99	33,14	17,20	4,73	17,51	27
10	Profile 10 50x150L	544,73	66,41	72,63	26,56	6,93	25,68	27
10	Profile 10 100x100L	318,90	318,90	63,78	63,78	8,12	30,08	27
10	Profile 10 100x200L	2151,72	605,89	215,17	121,18	14,90	55,17	28
10	Profile 10 60x60L	31,71	31,71	10,57	10,57	2,57	9,52	29
10	Profile 10 60x60	52,69	52,69	17,56	17,56	3,86	14,31	29
10	Profile 10 60x90	212,45	90,43	47,21	30,14	6,92	25,64	29
8	Profile 8 30x30 WG30	2,60	3,04	1,65	1,96	0,87	3,23	30
8	Profile 8 30x30 WG40	2,48	2,91	1,58	1,83	0,85	3,13	30
8	Profile 8 30x45 WG30	7,21	4,29	3,21	2,74	1,22	4,51	30
8	Profile 8 30x45 WG40	6,95	4,11	3,09	2,57	1,20	4,44	30
8	Frame profile 8 22,5x30	2,93	1,59	1,85	1,39	0,85	3,15	31
8	Frame profile 10 22,5x45	6,28	1,53	2,55	1,17	0,87	3,21	31
8	Suspension profile 8 15x30	2,16	0,51	1,41	0,65	0,56	2,07	31
10	Profile rail 10 30x45C	10,52	5,66	4,31	3,77	1,19	4,43	31
10	Sliding door profile 10 AL 45	12,28	16,83	4,78	7,48	1,90	7,05	32
8	Section profile 8 55x22,5 / SP1	10,53	2,85	3,40	2,53	1,31	4,84	32
6/10	U-profile 10 40x45 for Roller c.	5,89	10,31	2,31	5,16	1,36	5,05	32
10	Cover profile 10 AL					0,06	0,21	32
	Profile D28L	1,33	1,33	0,95	0,95	0,48	1,79	33
10	Profile D28L N10	1,02	1,97	0,88	1,41	0,71	2,63	33
	Profile D28	1,61	1,61	0,58	0,58	0,71	2,63	33

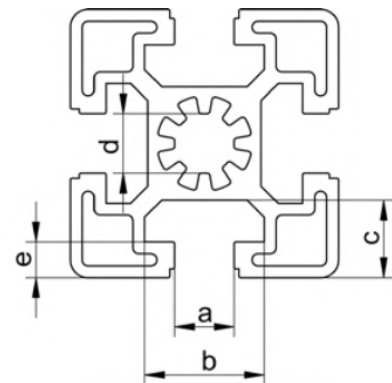
Profilkantenlänge
Edge length of
profile

Toleranzen
Tolerances

a [mm]		Außenmaß a bzw. / Sense of proportion a respectively
über / at	bis / to	Nutlage n ± [mm] Position of nut ± [mm]
0	20	±0,15
20	30	±0,2
40	60	±0,3
80	100	±0,4
120	180	±0,5



	6	8	10
a	6,0 +0,3/-0	8,0 +0,3/-0	10,0 +0,4/-0
b	12 ±0,2	16,5 ±0,2	20,1 ±0,25
c	5,5 ±0,15	9,0 ±0,15	12,5 ±0,15 *
d	1,5 ±0,15	2,2 ±0,15	10,0 ±0,15
e	5,5 +0,2/-0,1	7,3 +0,2/-0,1	6,0 ±0,15

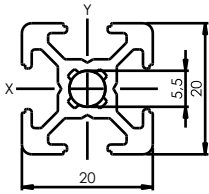


* max. 14,5 ±0,15 bei / for Profile 10 45x45L



Beschreibung
Description

Profile 6 20x20



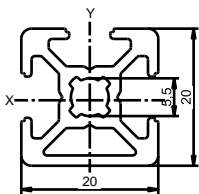
VPE / PU
LÄNGE / LENGTH

20 Stk. /pcs.
3060 mm



Beschreibung
Description

Profile 6 20x20 3N



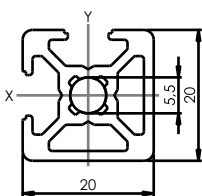
VPE / PU
LÄNGE / LENGTH

20 Stk. /pcs.
3060 mm



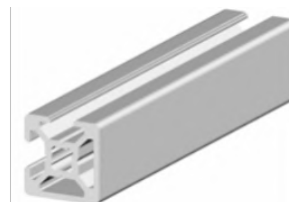
Beschreibung
Description

Profile 6 20x20 2NVS



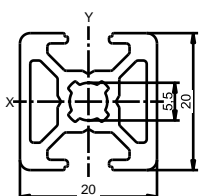
VPE / PU
LÄNGE / LENGTH
LÄNGE / LENGTH

20 Stk. /pcs.
3060 mm
6060 mm



Beschreibung
Description

Profile 6 20x20 2N



VPE / PU
LÄNGE / LENGTH

20 Stk. /pcs.
3060 mm

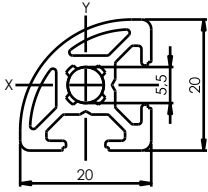


Raster 20
Grid 20



Beschreibung
Description

Profile 6 20x20 R



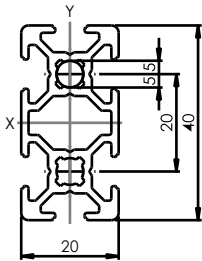
VPE / PU
LÄNGE / LENGTH

20 Stk. /pcs.
3060 mm



Beschreibung
Description

Profile 6 20x40



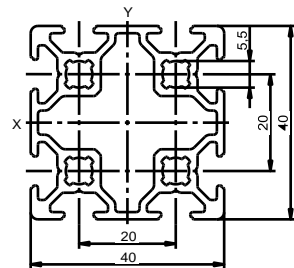
VPE / PU
LÄNGE / LENGTH

24 Stk. /pcs.
3060 mm



Beschreibung
Description

Profile 6 40x40



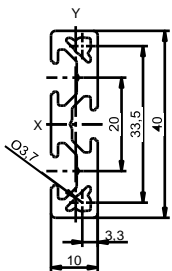
VPE / PU
LÄNGE / LENGTH

10 Stk. /pcs.
6060 mm



Beschreibung
Description

Profile 6 10x40



VPE / PU
LÄNGE / LENGTH

10 Stk. /pcs.
3060 mm



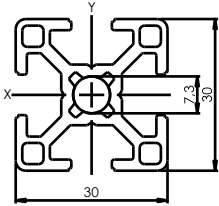
Raster 30
Grid 30



Beschreibung
Description

Profile 8 30x30

PAL AVAILABLE



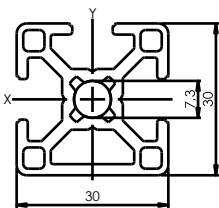
VPE / PU
VPE / PU / PAL
LÄNGE / LENGTH

20 Stk. / pcs.
220 Stk. / pcs.
6060 mm



Beschreibung
Description

Profile 8 30x30 3N



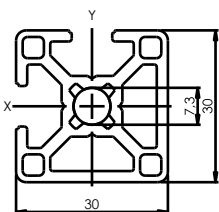
VPE / PU
LÄNGE / LENGTH

20 Stk. / pcs.
6060 mm



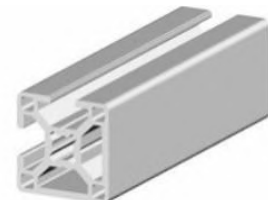
Beschreibung
Description

Profile 8 30x30 2NVS



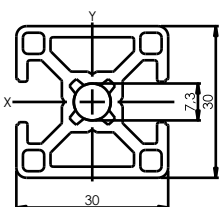
VPE / PU
LÄNGE / LENGTH

20 Stk. / pcs.
6060 mm



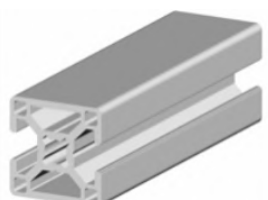
Beschreibung
Description

Profile 8 30x30 2N



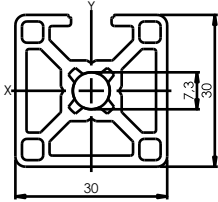
VPE / PU
LÄNGE / LENGTH

20 Stk. / pcs.
6060 mm



Beschreibung
Description

Profile 8 30x30 1N



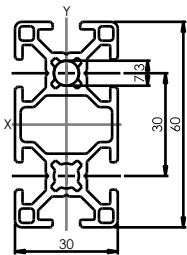
VPE / PU
LÄNGE / LENGTH

20 Stk. /pcs.
6060 mm



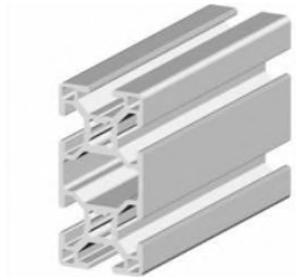
Beschreibung
Description

Profile 8 30x60



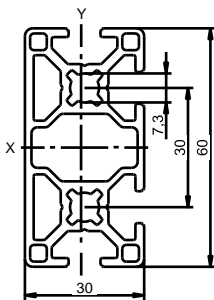
VPE / PU
LÄNGE / LENGTH

10 Stk. /pcs.
6060 mm



Beschreibung
Description

Profile 8 30x60 4N



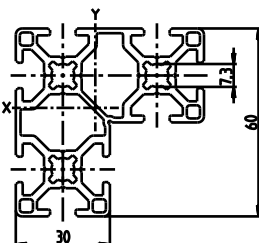
VPE / PU
LÄNGE / LENGTH

10 Stk. /pcs.
6060 mm



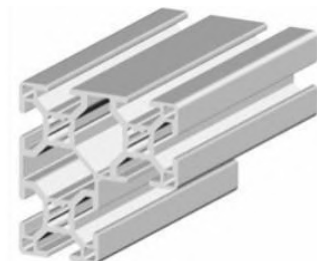
Beschreibung
Description

Profile 8 30x60x60



VPE / PU
LÄNGE / LENGTH

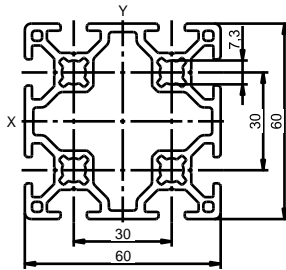
20 Stk. /pcs.
6060 mm





Beschreibung
Description

Profil 8 60x60



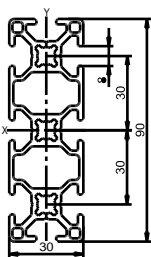
VPE / PU
LÄNGE / LENGTH

10 Stk. / pcs.
6060 mm



Beschreibung
Description

Profil 8 30x90



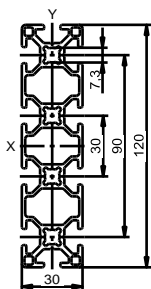
VPE / PU
LÄNGE / LENGTH

20 Stk. / pcs.
6060 mm



Beschreibung
Description

Profil 8 30x120



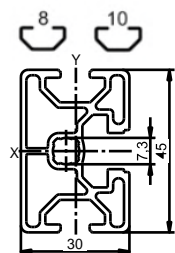
VPE / PU
LÄNGE / LENGTH

10 Stk. / pcs.
6060 mm



Beschreibung
Description

Profil 8 30x45



VPE / PU
LÄNGE / LENGTH

18 Stk. / pcs.
6060 mm



Raster 30
Grid 30

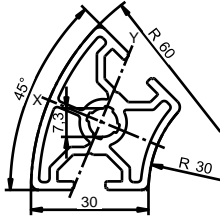


Beschreibung
Description

Profil 8 30 R45

VPE / PU
LÄNGE / LENGTH

20 Stk. / pcs.
6060 mm

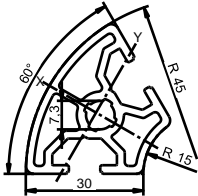


Beschreibung
Description

Profil 8 30 R60

VPE / PU
LÄNGE / LENGTH

20 Stk. / pcs.
6060 mm

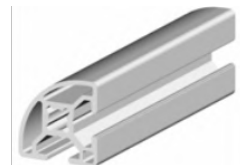
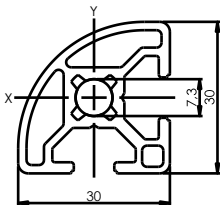


Beschreibung
Description

Profil 8 30x30 R

VPE / PU
LÄNGE / LENGTH

20 Stk. / pcs.
6060 mm

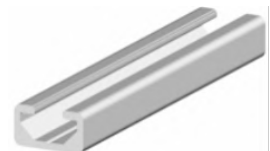
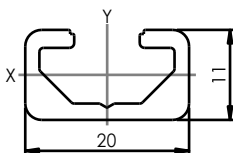


Beschreibung
Description

Profil 8 11x20

VPE / PU
LÄNGE / LENGTH

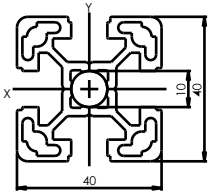
10 Stk. / pcs.
2060 mm



Beschreibung
Description

Profile 10 40x40L

PAL AVAILABLE



VPE / PU
VPE / PU / PAL
LÄNGE / LENGTH

20 Stk. / pcs.
108 Stk. / pcs.
6060 mm

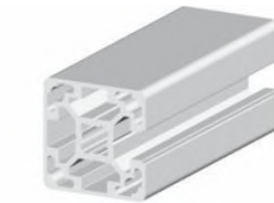
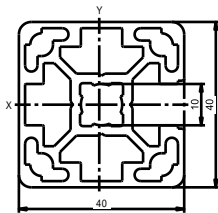


Beschreibung
Description

Profile 10 40x40L 1N

VPE / PU
LÄNGE / LENGTH

20 Stk. / pcs.
6060 mm

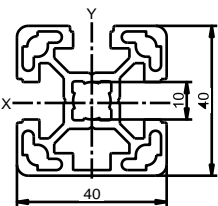


Beschreibung
Description

Profile 10 40x40L 3N

VPE / PU
LÄNGE / LENGTH

20 Stk. / pcs.
6060 mm

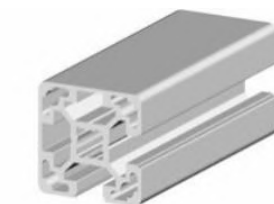
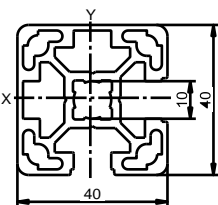


Beschreibung
Description

Profile 10 40x40L 2NVS

VPE / PU
LÄNGE / LENGTH

20 Stk. / pcs.
6060 mm

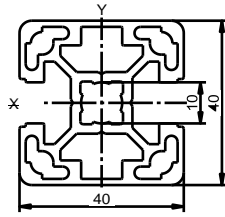


Raster 40
Grid 40



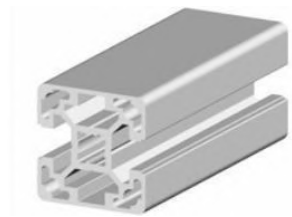
Beschreibung
Description

Profile 10 40x40L 2N



VPE / PU
LÄNGE / LENGTH

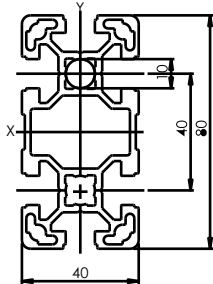
20 Stk. / pcs.
6060 mm



Beschreibung
Description

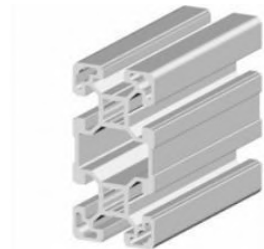
Profile 10 40x80L

PAL AVAILABLE



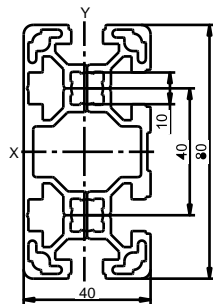
VPE / PU
VPE / PU / PAL
LÄNGE / LENGTH

12 Stk. / pcs.
64 Stk. / pcs.
6060 mm



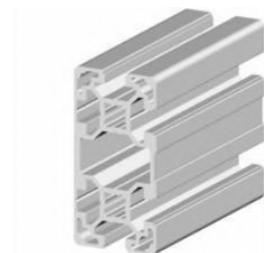
Beschreibung
Description

Profile 10 40x80L 4N



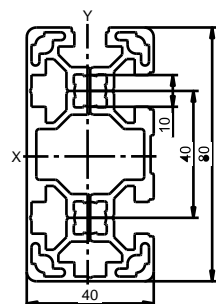
VPE / PU
LÄNGE / LENGTH

6 Stk. / pcs.
6060 mm



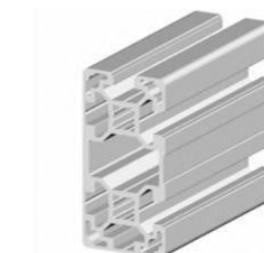
Beschreibung
Description

Profile 10 40x80L 3NVS



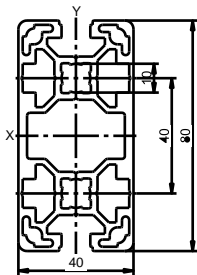
VPE / PU
LÄNGE / LENGTH

6 Stk. / pcs.
6060 mm



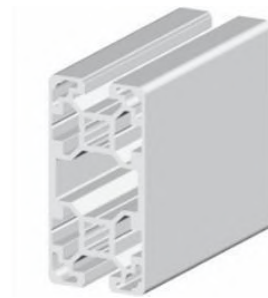
Beschreibung
Description

Profile 10 40x80L 2N



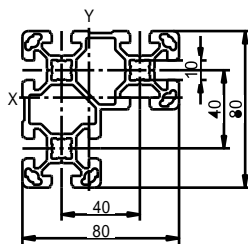
VPE / PU
LÄNGE / LENGTH

6 Stk. / pcs.
6060 mm



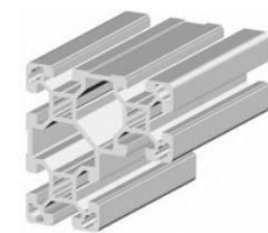
Beschreibung
Description

Profile 10 40x80x80L



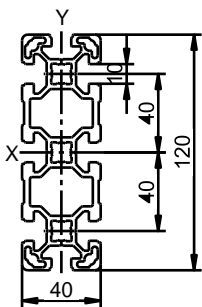
VPE / PU
LÄNGE / LENGTH

8 Stk. / pcs.
6060 mm



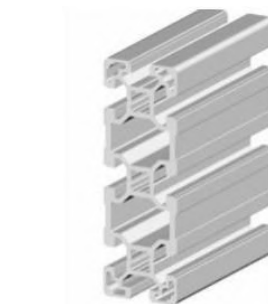
Beschreibung
Description

Profile 10 40x120L



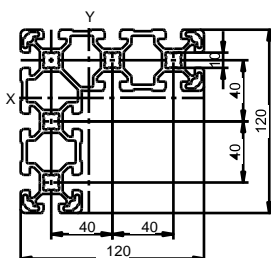
VPE / PU
LÄNGE / LENGTH

8 Stk. / pcs.
6060 mm



Beschreibung
Description

Profile 10 40x120x120L



VPE / PU
LÄNGE / LENGTH

4 Stk. / pcs.
6060 mm



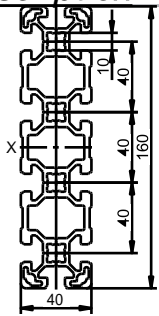
Raster 40
Grid 40



Beschreibung

Description

Profile 10 40x160L



VPE / PU
LÄNGE / LENGTH

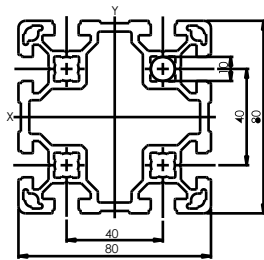
6 Stk. / pcs.
6060 mm



Beschreibung

Description

Profile 10 80x80L



VPE / PU
LÄNGE / LENGTH

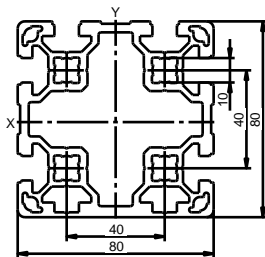
6 Stk. / pcs.
6060 mm



Beschreibung

Description

Profile 10 80x80L 6N



VPE / PU
LÄNGE / LENGTH

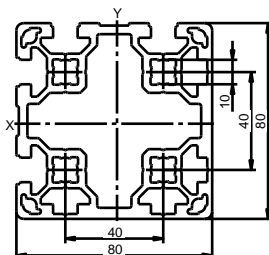
6 Stk. / pcs.
6060 mm



Beschreibung

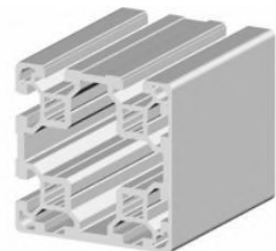
Description

Profile 10 80x80L 4NVS



VPE / PU
LÄNGE / LENGTH

6 Stk. / pcs.
6060 mm

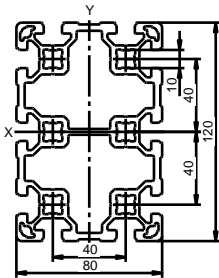


Raster 40
Grid 40



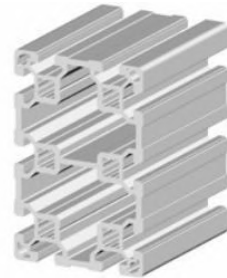
Beschreibung
Description

Profil 10 80x120L



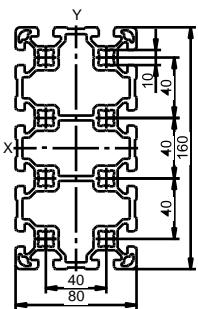
VPE / PU
LÄNGE / LENGTH

4 Stk. / pcs.
6060 mm



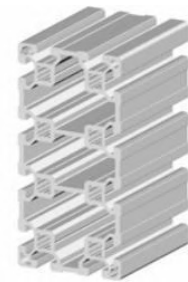
Beschreibung
Description

Profil 10 80x160L



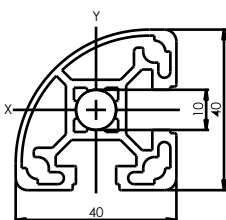
VPE / PU
LÄNGE / LENGTH

2 Stk. / pcs.
6060 mm



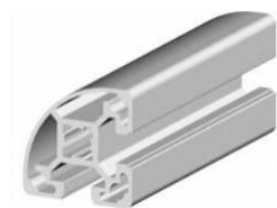
Beschreibung
Description

Profil 10 40x40L R



VPE / PU
LÄNGE / LENGTH

20 Stk. / pcs.
6060 mm



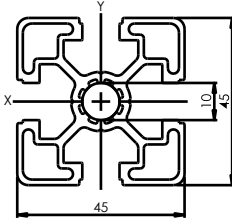
Raster 45
Grid 45



Beschreibung
Description

Profile 10 45x45L

PAL AVAILABLE



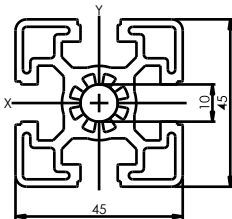
VPE / PU
VPE / PU / PAL
LÄNGE / LENGTH

20 Stk. / pcs.
112 Stk. / pcs.
6060 mm



Beschreibung
Description

Profile 10 45x45



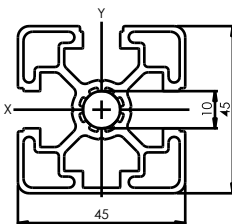
VPE / PU
LÄNGE / LENGTH

20 Stk. / pcs.
6060 mm



Beschreibung
Description

Profile 10 45x45L 3N



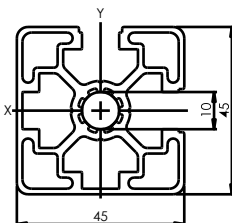
VPE / PU
LÄNGE / LENGTH

20 Stk. / pcs.
6060 mm



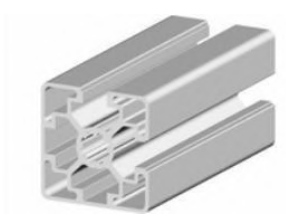
Beschreibung
Description

Profile 10 45x45L 2NVS



VPE / PU
LÄNGE / LENGTH

20 Stk. / pcs.
6060 mm

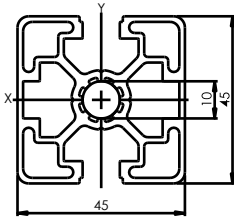


Raster 45
Grid 45



Beschreibung
Description

Profile 10 45x45L 2N



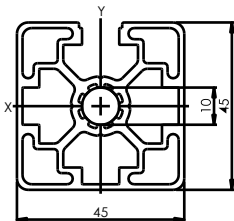
VPE / PU
LÄNGE / LENGTH

20 Stk. / pcs.
6060 mm



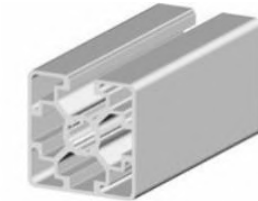
Beschreibung
Description

Profile 10 45x45L 1N



VPE / PU
LÄNGE / LENGTH

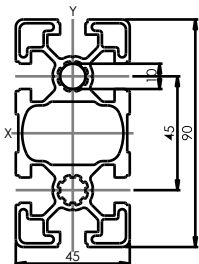
20 Stk. / pcs.
6060 mm



Beschreibung
Description

Profile 10 45x90L

PAL AVAILABLE



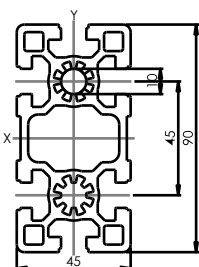
VPE / PU
VPE / PU / PAL
LÄNGE / LENGTH

12 Stk. / pcs.
56 Stk. / pcs.
6060 mm



Beschreibung
Description

Profile 10 45x90



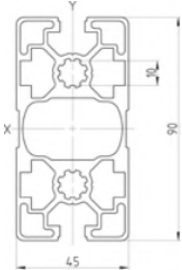
VPE / PU
LÄNGE / LENGTH

12 Stk. / pcs.
6060 mm



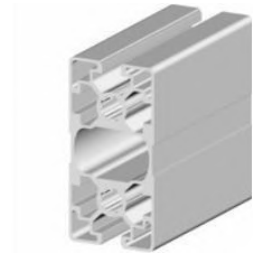
Beschreibung
Description

Profile 10 45x90L 2N



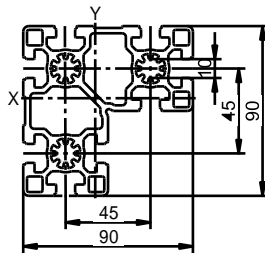
VPE / PU
LÄNGE / LENGTH

12 Stk. / pcs.
6060 mm



Beschreibung
Description

Profile 10 45x90x90L



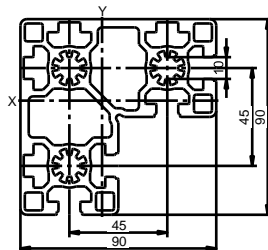
VPE / PU
LÄNGE / LENGTH

8 Stk. / pcs.
6060 mm



Beschreibung
Description

Profile 10 45x90x90L 4NVS D (Designvariante)



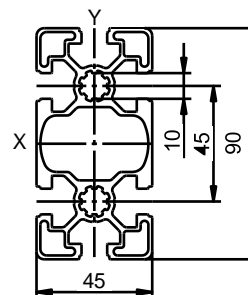
VPE / PU
LÄNGE / LENGTH

8 Stk. / pcs.
6060 mm



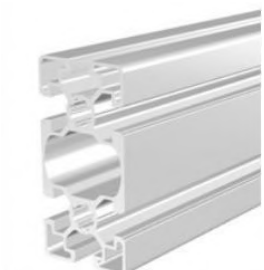
Beschreibung
Description

Profile 10 45x90L D (Designvariante)



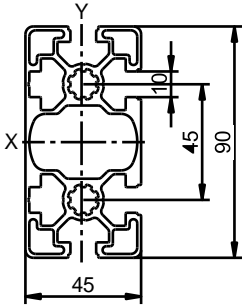
VPE / PU
LÄNGE / LENGTH

12 Stk. / pcs.
6060 mm



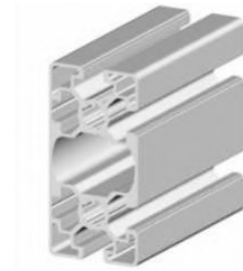
Beschreibung
Description

Profile 10 45x90L 4N D (Designvariante)



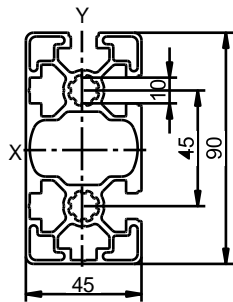
VPE / PU
LÄNGE / LENGTH

12 Stk. / pcs.
6060 mm



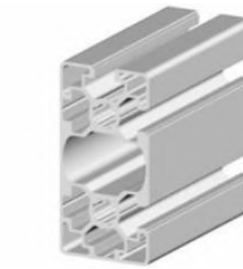
Beschreibung
Description

Profile 10 45x90L 2NVS D (Designvariante)



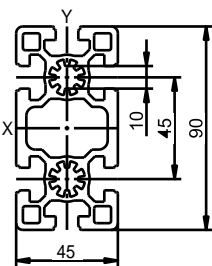
VPE / PU
LÄNGE / LENGTH

12 Stk. / pcs.
6060 mm



Beschreibung
Description

Profile 10 45x90 D (Designvariante)



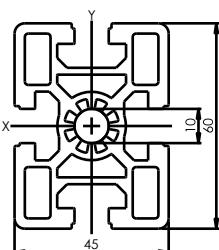
VPE / PU
LÄNGE / LENGTH

36 Stk. / pcs.
6060 mm



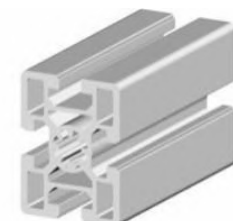
Beschreibung
Description

Profile 10 45x60



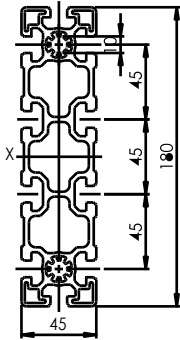
VPE / PU
LÄNGE / LENGTH

20 Stk. / pcs.
6060 mm



Beschreibung
Description

Profile 10 45x180



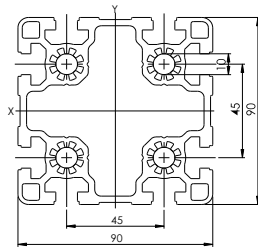
VPE / PU
LÄNGE / LENGTH

6 Stk. / pcs.
6060 mm



Beschreibung
Description

Profile 10 90x90L



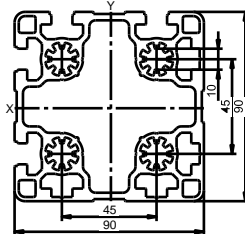
VPE / PU
LÄNGE / LENGTH

6 Stk. / pcs.
6060 mm



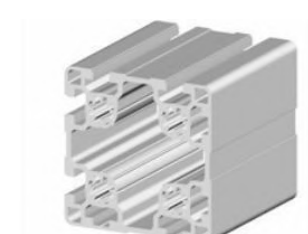
Beschreibung
Description

Profile 10 90x90L 4NVS



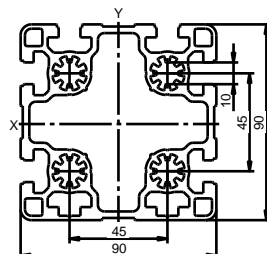
VPE / PU
LÄNGE / LENGTH

6 Stk. / pcs.
6060 mm



Beschreibung
Description

Profile 10 90x90L 6N



VPE / PU
LÄNGE / LENGTH

6 Stk. / pcs.
6060 mm

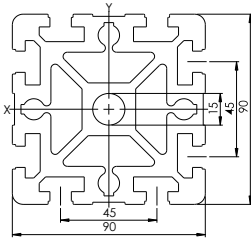


Raster 45
Grid 45



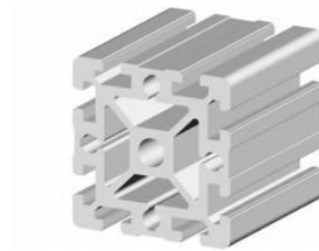
Beschreibung
Description

Profile 10 90x90



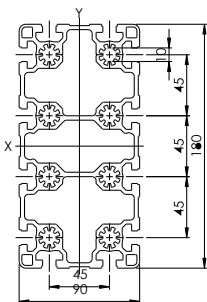
VPE / PU
LÄNGE / LENGTH

6 Stk. / pcs.
6060 mm



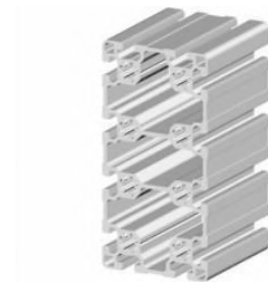
Beschreibung
Description

Profile 10 90x180L



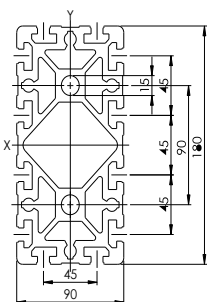
VPE / PU
LÄNGE / LENGTH

3 Stk. / pcs.
6060 mm



Beschreibung
Description

Profile 10 90x180



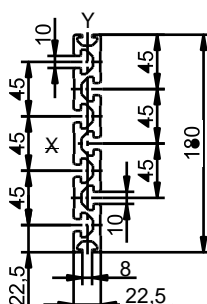
VPE / PU
LÄNGE / LENGTH

3 Stk. / pcs.
6060 mm



Beschreibung
Description

Profile 10 22,5x180



VPE / PU
LÄNGE / LENGTH

6 Stk. / pcs.
6060 mm

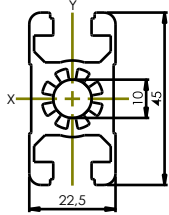


Raster 45
Grid 45



Beschreibung
Description

Profil 10 22,5x45



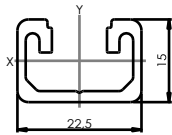
VPE / PU
LÄNGE / LENGTH

24 Stk. / pcs.
6060 mm



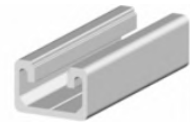
Beschreibung
Description

Profil 10 15x22,5



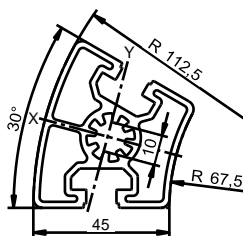
VPE / PU
LÄNGE / LENGTH

10 Stk. / pcs.
3060 mm



Beschreibung
Description

Profil 10 45 R30



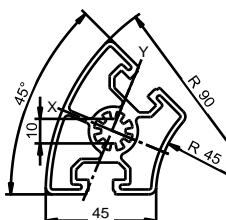
VPE / PU
LÄNGE / LENGTH

20 Stk. / pcs.
6060 mm



Beschreibung
Description

Profil 10 45 R45



VPE / PU
LÄNGE / LENGTH

20 Stk. / pcs.
6060 mm

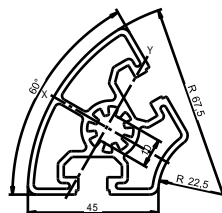


Raster 45
Grid 45



Beschreibung
Description

Profile 10 45 R60



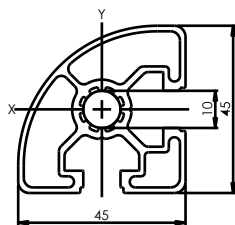
VPE / PU
LÄNGE / LENGTH

20 Stk. / pcs.
6060 mm



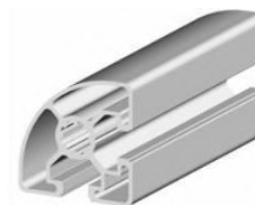
Beschreibung
Description

Profile 10 45x45L R



VPE / PU
LÄNGE / LENGTH

20 Stk. / pcs.
6060 mm

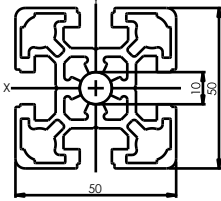


Raster 50
Grid 50



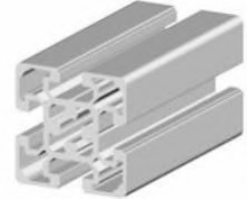
Beschreibung
Description

Profile 10 50x50L



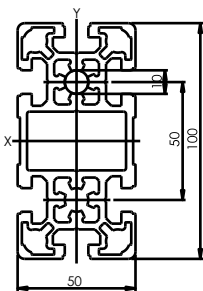
VPE / PU
LÄNGE / LENGTH

20 Stk. / pcs.
6060 mm



Beschreibung
Description

Profile 10 50x100L



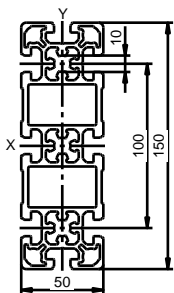
VPE / PU
LÄNGE / LENGTH

10 Stk. / pcs.
6060 mm



Beschreibung
Description

Profile 10 50x150L



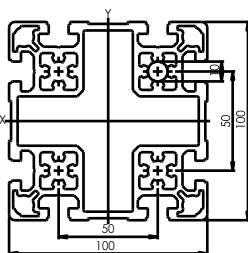
VPE / PU
LÄNGE / LENGTH

4 Stk. / pcs.
6060 mm



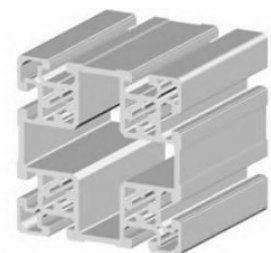
Artikelnummer
Description

Profile 10 100x100L



VPE / PU
LÄNGE / LENGTH

6 Stk. / pcs.
6060 mm

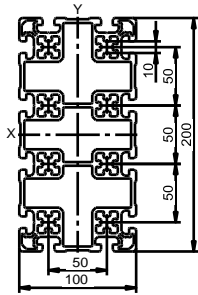


Raster 50
Grid 50



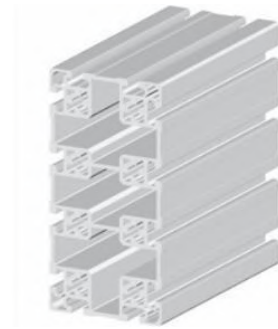
Beschreibung
Description

Profile 10 100x200L



VPE / PU
LÄNGE / LENGTH

1 Stk. / pcs.
6060 mm

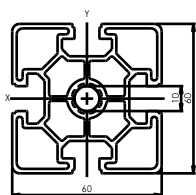


Raster 60
Grid 60



Beschreibung
Description

Profile 10 60x60L



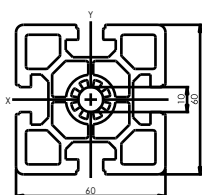
VPE / PU
LÄNGE / LENGTH

20 Stk. / pcs.
6060 mm



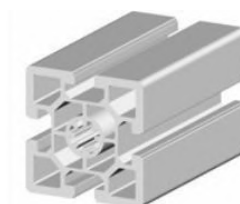
Beschreibung
Description

Profile 10 60x60



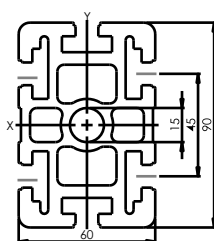
VPE / PU
LÄNGE / LENGTH

20 Stk. / pcs.
6060 mm



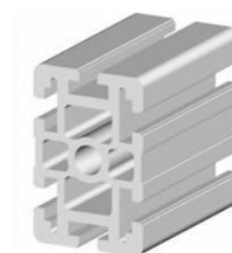
Beschreibung
Description

Profile 10 60x90



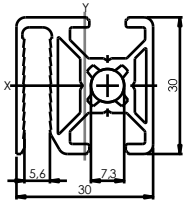
VPE / PU
LÄNGE / LENGTH

10 Stk. / pcs.
6060 mm



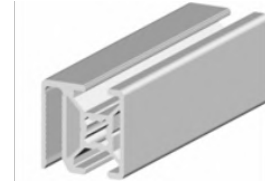
Beschreibung
Description

Profile 8 30x30 WG30



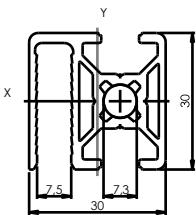
VPE / PU
LÄNGE / LENGTH

20 Stk. / pcs.
6060 mm



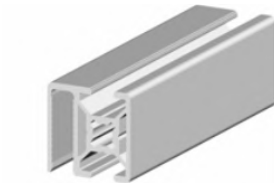
Beschreibung
Description

Profile 8 30x30 WG40



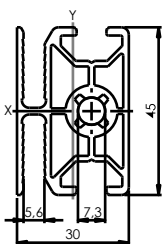
VPE / PU
LÄNGE / LENGTH

20 Stk. / pcs.
6060 mm



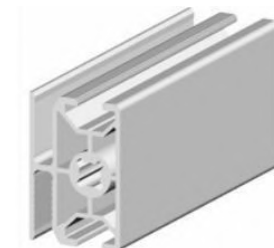
Beschreibung
Description

Profile 8 30x45 WG30



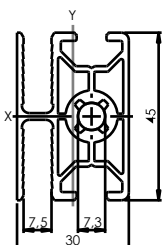
VPE / PU
LÄNGE / LENGTH

20 Stk. / pcs.
6060 mm



Beschreibung
Description

Profile 8 30x45 WG40



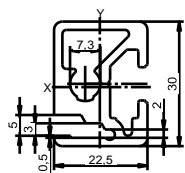
VPE / PU
LÄNGE / LENGTH

20 Stk. / pcs.
6060 mm



Beschreibung
Description

Frame profile 8 22,5x30

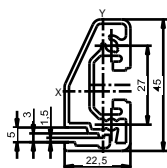


VPE / PU 20 Stk. / pcs.
LÄNGE / LENGTH 6060 mm

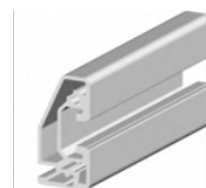


Beschreibung
Description

Frame profile 10 22,5x45

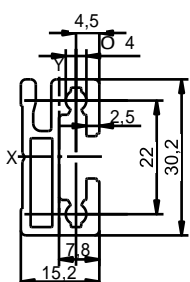


VPE / PU 20 Stk. / pcs.
LÄNGE / LENGTH 6060 mm



Beschreibung
Description

Suspension profile 8 15x30

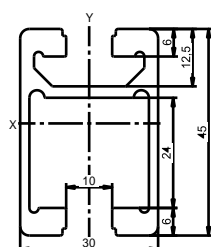


VPE / PU 10 Stk. / pcs.
LÄNGE / LENGTH 3060 mm

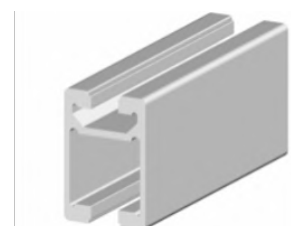


Beschreibung
Description

Profile rail 10 30x45C

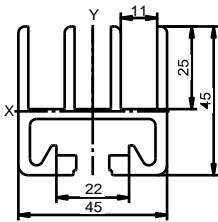


VPE / PU 20 Stk. / pcs.
LÄNGE / LENGTH 6060 mm



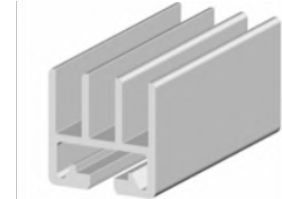
Beschreibung
Description

Sliding door profile 10 AL 45



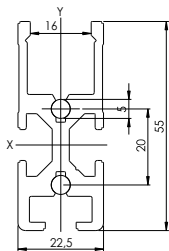
VPE / PU
LÄNGE / LENGTH

20 Stk. / pcs.
6060 mm



Beschreibung
Description

Section profile 8 55x22,5 / SP1



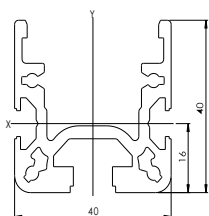
VPE / PU
LÄNGE / LENGTH

20 Stk. / pcs.
6060 mm



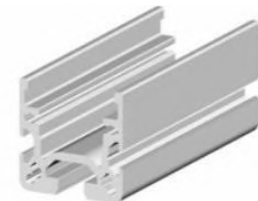
Beschreibung
Description

U-profile 10 40x45 for Roller conveyor



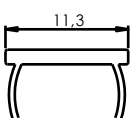
VPE / PU
LÄNGE / LENGTH

20 Stk. / pcs.
6060 mm



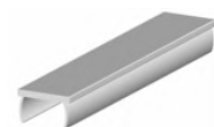
Beschreibung
Description

Cover profile 10 AL



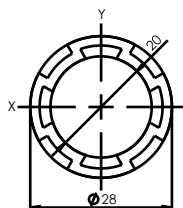
VPE / PU
LÄNGE / LENGTH

25 Stk. / pcs.
2000 mm



Beschreibung
Description

Profile D28L



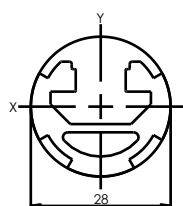
VPE / PU
LÄNGE / LENGTH

20 Stk. / pcs.
6060 mm



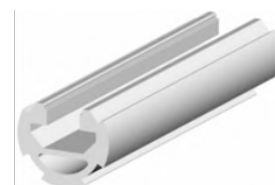
Beschreibung
Description

Profile D28L N10



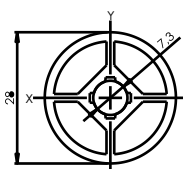
VPE / PU
LÄNGE / LENGTH

20 Stk. / pcs.
6060 mm



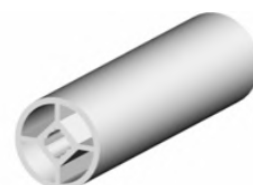
Beschreibung
Description

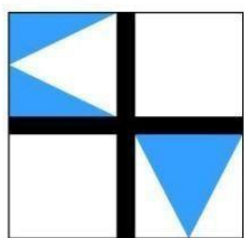
Profile D28



VPE / PU
LÄNGE / LENGTH

20 Stk. / pcs.
6060 mm





K+V
AUTOMATIKA KFT

ITEM Compatible Profile System – BOSCH Compatible Profile System – Custom-designed Profiles

K+V AUTOMATIKA KFT.

1037 BUDAPEST
Bécsi út 267. / 9. épület
HUNGARY

Phone: +36 1 244 8110
Fax: + 36 1 244 8109
E-mail: info@kvautomatika.hu
Website: www.kv-automatika.hu

