

SUCTION CUPS / VMECA Customized

KPS-1

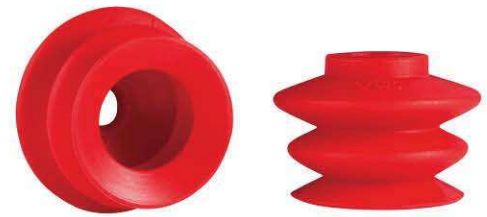


Features and Strengths

Developed to be used specially for bag opening application
Suitable to be used in thin plastic and film type material

Examples of use

Plastic bag opening, Thin Film Material, Paper Bag Handling



Recommended Lifting Force (Max.)

Model	Volume (cm ³)	Lifting Force (Kg) - Perpendicular		
		- 20 kPa	- 60 kPa	- 90 kPa
KPS-1	14.50	1.22	2.24	2.75

※ The lifting force above does not include safety factor

Material Specifications

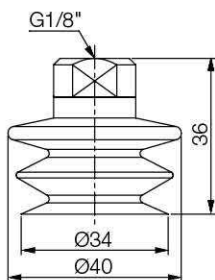
Material	Hardness Shore (°)	Color	Temperature (°C)
NBR	60	Black	-20~110
Silicone	55	Red	-70~200
White Silicone	55	Translucent White	-70~200
White Silicone (FDA)	55	Translucent White	-70~200
High temp. Silicone	50	Blue	-70~280
Conductive Silicone	70	Smoky Black	-45~90
Urethane	60	Dark Green	0~100

Material Resistance

Description	NBR	Silicone	White Silicone	High temp. Silicone	Conductive Silicone	Urethane
Wear Resistance	Excellent	Good	Good	Good	Good	Excellent
Oil	Excellent	Poor	Poor	Poor	Poor	Excellent
Weather / Ozone	Fair	Excellent	Excellent	Excellent	Excellent	Excellent
Alcohol	Good	Good	Good	Good	Good	Fair
Acid	Fair	Poor	Poor	Poor	Poor	Poor

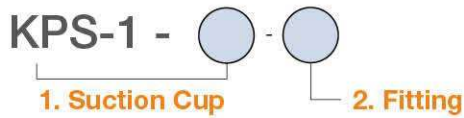
Dimension

[Unit : mm]



[With 18F fitting]

I Build an Ordering No.



1. Suction cup	Description	Symbol
	Customized suction cup, 34mm diameter, Nitrile (NBR)	KPS1-N
	Customized suction cup, 34mm diameter, Silicone	KPS1-S
	Customized suction cup, 34mm diameter, White silicone	KPS1-WS
	Customized suction cup, 34mm diameter, White silicone (FDA)	KPS1-WS(FDA)
	Customized suction cup, 34mm diameter, High temperature silicone	KPS1-HS
	Customized suction cup, 34mm diameter, Conductive silicone	KPS1-CS
	Customized suction cup, 34mm diameter, Urethane	KPS1-U

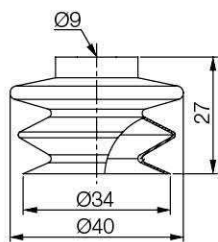
2. Fitting	Description	Symbol
	Fitting, G1/8 female	18F
	Fitting, G1/8 female, Mesh filter	M-18F

I Spare Parts – Rubber Parts

Part No.	Description	Weight (g)	Color
KPS1-N	Customized suction cup, 34mm diameter, Nitrile (NBR)	8.99	Black
KPS1-S	Customized suction cup, 34mm diameter, Silicone	8.35	Red
KPS1-WS	Customized suction cup, 34mm diameter, White silicone	7.62	Translucent White
KPS1-WS (FDA)	Customized suction cup, 34mm diameter, White silicone (FDA)	7.62	Translucent White
KPS1-HS	Customized suction cup, 34mm diameter, High temperature silicone	7.53	Blue
KPS1-CS	Customized suction cup, 34mm diameter, Conductive silicone	7.44	Smoky Black
KPS1-U	Customized suction cup, 34mm diameter, Urethane	8.17	Dark Green

I Dimension

[Unit : mm]



[Rubber Part]

I Spare Parts – Fittings

Part No. (Code No.)	Fitting size	Description	Weight (g)
350 000 3350	18F	G1/8 female	6.76
350 000 4350	18F-F	G1/8 female, Mesh filter	6.78

SUCTION CUPS / VMECA Customized

KPS-2



Features and Strengths

Developed to be used specially for bag opening application
Suitable to be used in thin plastic and film type material

Examples of use

Plastic bag opening, Thin Film Material, Paper Bag Handling



Recommended Lifting Force (Max.)

Model	Volume (cm ³)	Lifting Force (Kg) - Perpendicular		
		- 20 kPa	- 60 kPa	- 90 kPa
KPS-2	2.00	0.70	1.53	1.83

※ The lifting force above does not include safety factor

Material Specifications

Material	Hardness Shore (°)	Color	Temperature (°C)
NBR	60	Black	-20~110
Silicone	55	Red	-70~200
White Silicone	55	Translucent White	-70~200
White Silicone (FDA)	55	Translucent White	-70~200
High temp. Silicone	50	Blue	-70~280
Conductive Silicone	70	Smoky Black	-45~90
Urethane	60	Dark Green	0~100

Material Resistance

Description	NBR	Silicone	White Silicone	High temp. Silicone	Conductive Silicone	Urethane
Wear Resistance	Excellent	Good	Good	Good	Good	Excellent
Oil	Excellent	Poor	Poor	Poor	Poor	Excellent
Weather / Ozone	Fair	Excellent	Excellent	Excellent	Excellent	Excellent
Alcohol	Good	Good	Good	Good	Good	Fair
Acid	Fair	Poor	Poor	Poor	Poor	Poor

Build an Ordering No.

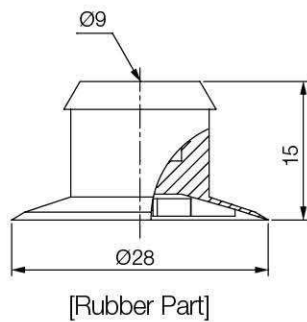
KPS-2 -

1. Suction Cup

1. Suction cup	Description	Weight (g)	Symbol
	Customized suction cup, 28mm diameter, Nitrile (NBR)	2.31	KPS2-N
	Customized suction cup, 28mm diameter, Silicone	2.15	KPS2-S
	Customized suction cup, 28mm diameter, White silicone	2.20	KPS2-WS
	Customized suction cup, 28mm diameter, White silicone (FDA)	2.20	KPS2-WS(FDA)
	Customized suction cup, 28mm diameter, High temperature silicone	2.50	KPS2-HS
	Customized suction cup, 28mm diameter, Conductive silicone	2.28	KPS2-CS
	Customized suction cup, 28mm diameter, Urethane	2.45	KPS2-U

Dimension

[Unit : mm]



SUCTION CUPS / VMECA Customized

KPS-3



Features and Strengths

Developed to be used specially for bag opening application
Suitable to be used in thin plastic and film type material

Examples of use

Plastic bag opening, Thin Film Material, Paper Bag Handling



Recommended Lifting Force (Max.)

Model	Volume (cm ³)	Lifting Force (Kg) - Perpendicular		
		- 20 kPa	- 60 kPa	- 90 kPa
KPS-3	0.50	0.35	0.85	1.12

※ The lifting force above does not include safety factor

Material Specifications

Material	Hardness Shore (°)	Color	Temperature (°C)
NBR	60	Black	-20~110
Silicone	55	Red	-70~200
White Silicone	55	Translucent White	-70~200
White Silicone (FDA)	55	Translucent White	-70~200
High temp. Silicone	50	Blue	-70~280
Conductive Silicone	70	Smoky Black	-45~90
Urethane	60	Dark Green	0~100

Material Resistance

Description	NBR	Silicone	White Silicone	High temp. Silicone	Conductive Silicone	Urethane
Wear Resistance	Excellent	Good	Good	Good	Good	Excellent
Oil	Excellent	Poor	Poor	Poor	Poor	Excellent
Weather / Ozone	Fair	Excellent	Excellent	Excellent	Excellent	Excellent
Alcohol	Good	Good	Good	Good	Good	Fair
Acid	Fair	Poor	Poor	Poor	Poor	Poor

I Build an Ordering No.

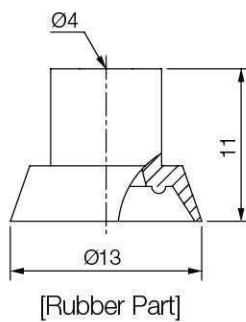
KPS-3 -

1. Suction Cup

1. Suction cup	Description	Weight (g)	Symbol
	Customized suction cup, 13mm diameter, Nitrile (NBR)	0.51	KPS3-N
	Customized suction cup, 13mm diameter, Silicone	0.46	KPS3-S
	Customized suction cup, 13mm diameter, White silicone	0.45	KPS3-WS
	Customized suction cup, 13mm diameter, White silicone (FDA)	0.45	KPS3-WS(FDA)
	Customized suction cup, 13mm diameter, High temperature silicone	0.52	KPS3-HS
	Customized suction cup, 13mm diameter, Conductive silicone	0.5	KPS3-CS
	Customized suction cup, 13mm diameter, Urethane	0.51	KPS3-U

I Dimension

[Unit : mm]



SUCTION CUPS / VMECA Customized

KPS-4



Features and Strengths

Developed to be used specially for bag opening application
Suitable to be used in thin plastic and film type material

Examples of use

Plastic bag opening, Thin Film Material, Paper Bag Handling



Recommended Lifting Force (Max.)

Model	Volume (cm ³)	Lifting Force (Kg) - Perpendicular		
		- 20 kPa	- 60 kPa	- 90 kPa
KPS-4	1.00	0.60	1.22	1.63

※ The lifting force above does not include safety factor

Material Specifications

Material	Hardness Shore (°)	Color	Temperature (°C)
NBR	60	Black	-20~110
Silicone	55	Red	-70~200
White Silicone	55	Translucent White	-70~200
White Silicone (FDA)	55	Translucent White	-70~200
High temp. Silicone	50	Blue	-70~280
Conductive Silicone	70	Smoky Black	-45~90
Urethane	60	Dark Green	0~100

Material Resistance

Description	NBR	Silicone	White Silicone	High temp. Silicone	Conductive Silicone	Urethane
Wear Resistance	Excellent	Good	Good	Good	Good	Excellent
Oil	Excellent	Poor	Poor	Poor	Poor	Excellent
Weather / Ozone	Fair	Excellent	Excellent	Excellent	Excellent	Excellent
Alcohol	Good	Good	Good	Good	Good	Fair
Acid	Fair	Poor	Poor	Poor	Poor	Poor

I Build an Ordering No.

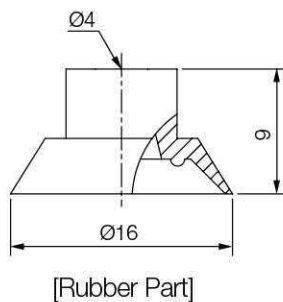
KPS-4 -

1. Suction Cup

1. Suction cup	Description	Weight (g)	Symbol
	Customized suction cup, 16mm diameter, Nitrile (NBR)	0.58	KPS4-N
	Customized suction cup, 16mm diameter, Silicone	0.57	KPS4-S
	Customized suction cup, 16mm diameter, White silicone	0.51	KPS4-WS
	Customized suction cup, 16mm diameter, White silicone (FDA)	0.51	KPS4-WS(FDA)
	Customized suction cup, 16mm diameter, High temperature silicone	0.58	KPS4-HS
	Customized suction cup, 16mm diameter, Conductive silicone	0.54	KPS4-CS
	Customized suction cup, 16mm diameter, Urethane	0.59	KPS4-U

I Dimension

[Unit : mm]



SUCTION CUPS / VMECA Customized

KPS-5



Features and Strengths

Developed to be used specially for bag opening application
Suitable to be used in thin plastic and film type material

Examples of use

Plastic bag opening, Thin Film Material, Paper Bag Handling



Recommended Lifting Force (Max.)

Model	Volume (cm ³)	Lifting Force (Kg) - Perpendicular		
		- 20 kPa	- 60 kPa	- 90 kPa
KPS-5	2.00	0.70	1.53	1.83

※ The lifting force above does not include safety factor

Material Specifications

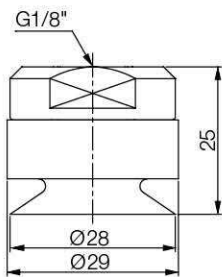
Material	Hardness Shore (°)	Color	Temperature (°C)
NBR	60	Black	-20~110
Silicone	55	Red	-70~200
White Silicone	55	Translucent White	-70~200
White Silicone (FDA)	55	Translucent White	-70~200
High temp. Silicone	50	Blue	-70~280
Conductive Silicone	70	Smoky Black	-45~90
Urethane	60	Dark Green	0~100

Material Resistance

Description	NBR	Silicone	White Silicone	High temp. Silicone	Conductive Silicone	Urethane
Wear Resistance	Excellent	Good	Good	Good	Good	Excellent
Oil	Excellent	Poor	Poor	Poor	Poor	Excellent
Weather / Ozone	Fair	Excellent	Excellent	Excellent	Excellent	Excellent
Alcohol	Good	Good	Good	Good	Good	Fair
Acid	Fair	Poor	Poor	Poor	Poor	Poor

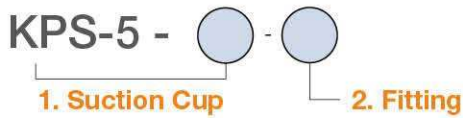
Dimension

[Unit : mm]



[With 18F fitting]

I Build an Ordering No.



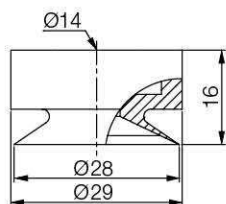
1. Suction cup	Description	Symbol
	Customized suction cup, 28mm diameter, Nitrile (NBR)	KPS5-N
	Customized suction cup, 28mm diameter, Silicone	KPS5-S
	Customized suction cup, 28mm diameter, White silicone	KPS5-WS
	Customized suction cup, 28mm diameter, White silicone (FDA)	KPS5-WS(FDA)
	Customized suction cup, 28mm diameter, High temperature silicone	KPS5-HS
	Customized suction cup, 28mm diameter, Conductive silicone	KPS5-CS
	Customized suction cup, 28mm diameter, Urethane	KPS5-U
2. Fitting	Description	Symbol
	Fitting, G1/8 female	18F
	Fitting, G1/8 female, Mesh filter	M-18F

I Spare Parts – Rubber Parts

Part No.	Description	Weight (g)	Color
KPS5-N	Customized suction cup, 28mm diameter, Nitrile (NBR)	7.07	Black
KPS5-S	Customized suction cup, 28mm diameter, Silicone	6.48	Red
KPS5-WS	Customized suction cup, 28mm diameter, White silicone	6.48	Translucent White
KPS5-WS(FDA)	Customized suction cup, 28mm diameter, White silicone (FDA)	6.48	Translucent White
KPS5-HS	Customized suction cup, 28mm diameter, High temperature silicone	6.56	Blue
KPS5-CS	Customized suction cup, 28mm diameter, Conductive silicone	6.65	Smoky Black
KPS5-U	Customized suction cup, 28mm diameter, Urethane	7.35	Dark Green

I Dimension

[Unit : mm]



[Rubber Part]

I Spare Parts – Fittings

Part No. (Code No.)	Fitting size	Description	Weight (g)
350 000 3351	18F	G1/8 female	16.22
350 000 4351	18F-F	G1/8 female, Mesh filter	16.26

SUCTION CUPS / VMECA Customized

KPS-5-15

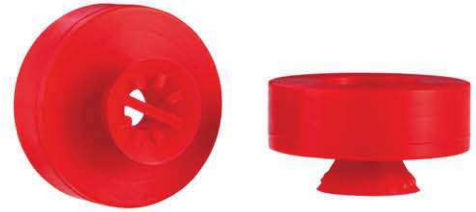


Features and Strengths

Developed to be used specially for bag opening application
Suitable to be used in thin plastic and film type material

Examples of use

Plastic bag opening, Thin Film Material, Paper Bag Handling



Recommended Lifting Force (Max.)

Model	Volume (cm ³)	Lifting Force (Kg) - Perpendicular		
		- 20 kPa	- 60 kPa	- 90 kPa
KPS-5-15	1.10	0.40	1.11	1.23

※ The lifting force above does not include safety factor

Material Specifications

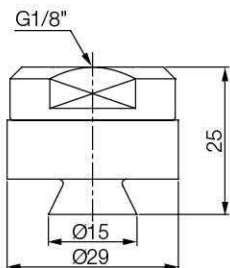
Material	Hardness Shore (°)	Color	Temperature (°C)
NBR	60	Black	-20~110
Silicone	55	Red	-70~200
White Silicone	55	Translucent White	-70~200
White Silicone (FDA)	55	Translucent White	-70~200
High temp. Silicone	50	Blue	-70~280
Conductive Silicone	70	Smoky Black	-45~90
Urethane	60	Dark Green	0~100

Material Resistance

Description	NBR	Silicone	White Silicone	High temp. Silicone	Conductive Silicone	Urethane
Wear Resistance	Excellent	Good	Good	Good	Good	Excellent
Oil	Excellent	Poor	Poor	Poor	Poor	Excellent
Weather / Ozone	Fair	Excellent	Excellent	Excellent	Excellent	Excellent
Alcohol	Good	Good	Good	Good	Good	Fair
Acid	Fair	Poor	Poor	Poor	Poor	Poor

Dimension

[Unit : mm]



[With 18F fitting]

I Build an Ordering No.



1. Suction cup	Description	Symbol
	Customized suction cup, 15mm diameter, Nitrile (NBR)	KPS-5-15-N
	Customized suction cup, 15mm diameter, Silicone	KPS-5-15-S
	Customized suction cup, 15mm diameter, White silicone	KPS-5-15-WS
	Customized suction cup, 15mm diameter, White silicone (FDA)	KPS-5-15-WS(FDA)
	Customized suction cup, 15mm diameter, High temperature silicone	KPS-5-15-HS
	Customized suction cup, 15mm diameter, Conductive silicone	KPS-5-15-CS
	Customized suction cup, 15mm diameter, Urethane	KPS-5-15-U

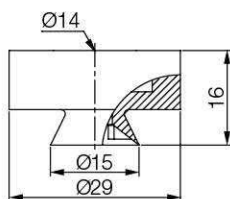
2. Fitting	Description	Symbol
	Fitting, G1/8 female	18F
	Fitting, G1/8 female, Mesh filter	M-18F

I Spare Parts – Rubber Parts

Part No.	Description	Weight (g)	Color
KPS-5-15-N	Customized suction cup, 15mm diameter, Nitrile (NBR)	6.17	Black
KPS-5-15-S	Customized suction cup, 15mm diameter, Silicone	5.89	Red
KPS-5-15-WS	Customized suction cup, 15mm diameter, White silicone	5.85	Translucent White
KPS-5-15-WS(FDA)	Customized suction cup, 15mm diameter, White silicone (FDA)	5.85	Translucent White
KPS-5-15-HS	Customized suction cup, 15mm diameter, High temperature silicone	6.02	Blue
KPS-5-15-CS	Customized suction cup, 15mm diameter, Conductive silicone	6.35	Smoky Black
KPS-5-15-U	Customized suction cup, 15mm diameter, Urethane	6.39	Dark Green

I Dimension

[Unit : mm]



[Rubber Part]

I Spare Parts – Fittings

Part No. (Code No.)	Fitting size	Description	Weight (g)
350 000 3351	18F	G1/8 female	16.22
350 000 4351	18F-F	G1/8 female, Mesh filter	16.26

SUCTION CUPS / VMECA Customized

KPS-6

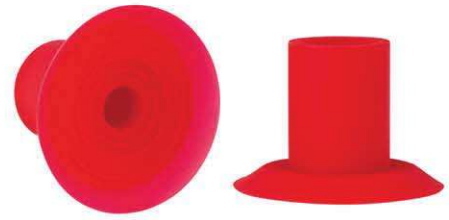


Features and Strengths

Developed to be used specially for bag opening application
Suitable to be used in thin plastic and film type material

Examples of use

Plastic bag opening, Thin Film Material, Paper Bag Handling



Recommended Lifting Force (Max.)

Model	Volume (cm ³)	Lifting Force (Kg) - Perpendicular		
		- 20 kPa	- 60 kPa	- 90 kPa
KPS-6	2.00	0.80	1.70	2.05

※ The lifting force above does not include safety factor

Material Specifications

Material	Hardness Shore (°)	Color	Temperature (°C)
NBR	60	Black	-20~110
Silicone	55	Red	-70~200
White Silicone	55	Translucent White	-70~200
White Silicone (FDA)	55	Translucent White	-70~200
High temp. Silicone	50	Blue	-70~280
Conductive Silicone	70	Smoky Black	-45~90
Urethane	60	Dark Green	0~100

Material Resistance

Description	NBR	Silicone	White Silicone	High temp. Silicone	Conductive Silicone	Urethane
Wear Resistance	Excellent	Good	Good	Good	Good	Excellent
Oil	Excellent	Poor	Poor	Poor	Poor	Excellent
Weather / Ozone	Fair	Excellent	Excellent	Excellent	Excellent	Excellent
Alcohol	Good	Good	Good	Good	Good	Fair
Acid	Fair	Poor	Poor	Poor	Poor	Poor

I Build an Ordering No.

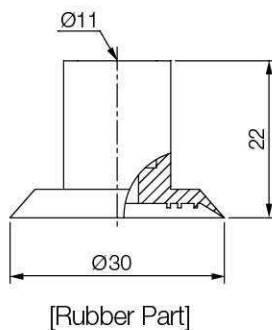
KPS-6 -

1. Suction Cup

1. Suction cup	Description	Weight (g)	Symbol
	Customized suction cup, 30mm diameter, Nitrile (NBR)	2.65	KPS6-N
	Customized suction cup, 30mm diameter, Silicone	2.51	KPS6-S
	Customized suction cup, 30mm diameter, White silicone	2.47	KPS6-WS
	Customized suction cup, 30mm diameter, White silicone (FDA)	2.47	KPS6-WS(FDA)
	Customized suction cup, 30mm diameter, High temperature silicone	2.54	KPS6-HS
	Customized suction cup, 30mm diameter, Conductive silicone	2.55	KPS6-CS
	Customized suction cup, 30mm diameter, Urethane	2.95	KPS6-U

I Dimension

[Unit : mm]



SUCTION CUPS / VMECA Customized

KPS-7



Features and Strengths

Developed to be used specially for bag opening application
Suitable to be used in thin plastic and film type material

Examples of use

Plastic bag opening, Thin Film Material, Paper Bag Handling



Recommended Lifting Force (Max.)

Model	Volume (cm ³)	Lifting Force (Kg) - Perpendicular		
		- 20 kPa	- 60 kPa	- 90 kPa
KPS-7	20.00	5.50	14.00	18.50

※ The lifting force above does not include safety factor

Material Specifications

Material	Hardness Shore (°)	Color	Temperature (°C)
NBR	60	Black	-20~110
Silicone	55	Red	-70~200
White Silicone	55	Translucent White	-70~200
White Silicone (FDA)	55	Translucent White	-70~200
High temp. Silicone	50	Blue	-70~280
Conductive Silicone	70	Smoky Black	-45~90
Urethane	60	Dark Green	0~100

Material Resistance

Description	NBR	Silicone	White Silicone	High temp. Silicone	Conductive Silicone	Urethane
Wear Resistance	Excellent	Good	Good	Good	Good	Excellent
Oil	Excellent	Poor	Poor	Poor	Poor	Excellent
Weather / Ozone	Fair	Excellent	Excellent	Excellent	Excellent	Excellent
Alcohol	Good	Good	Good	Good	Good	Fair
Acid	Fair	Poor	Poor	Poor	Poor	Poor

Build an Ordering No.

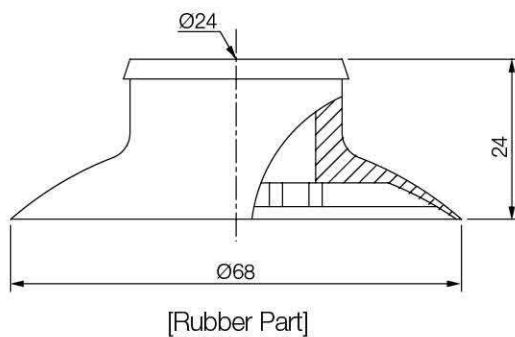
KPS-7 -

1. Suction Cup

1. Suction cup	Description	Weight (g)	Symbol
	Customized suction cup, 68mm diameter, Nitrile (NBR)	17.07	KPS7-N
	Customized suction cup, 68mm diameter, Silicone	14.99	KPS7-S
	Customized suction cup, 68mm diameter, White silicone	15.48	KPS7-WS
	Customized suction cup, 68mm diameter, White silicone (FDA)	15.48	KPS7-WS(FDA)
	Customized suction cup, 68mm diameter, High temperature silicone	15.86	KPS7-HS
	Customized suction cup, 68mm diameter, Conductive silicone	16.9	KPS7-CS
	Customized suction cup, 68mm diameter, Urethane	16.98	KPS7-U

Dimension

[Unit : mm]



SUCTION CUPS / VMECA Customized

KPS-8



Features and Strengths

Developed to be used specially for bag opening application
Suitable to be used in thin plastic and film type material

Examples of use

Plastic bag opening, Thin Film Material, Paper Bag Handling



Recommended Lifting Force (Max.)

Model	Volume (cm ³)	Lifting Force (Kg) - Perpendicular		
		- 20 kPa	- 60 kPa	- 90 kPa
KPS-8	1.4	0.5	1.15	1.25

※ The lifting force above does not include safety factor

Material Specifications

Material	Hardness Shore (°)	Color	Temperature (°C)
Silicone	55	Red	-70~200
White Silicone	55	Translucent White	-70~200
White Silicone (FDA)	55	Translucent White	-70~200
High temp. Silicone	50	Blue	-70~280

Material Resistance

Description	Silicone	White Silicone	High temp.Silicone
Wear Resistance	Good	Good	Good
Oil	Poor	Poor	Poor
Weather / Ozone	Excellent	Excellent	Excellent
Alcohol	Good	Good	Good
Acid	Poor	Poor	Poor

Build an Ordering No.

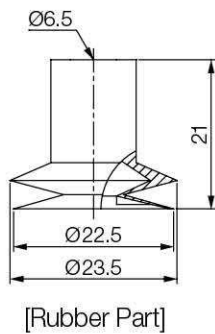
KPS-8 -

1. Suction Cup

1. Suction cup	Description	Weight (g)	Symbol
	Customized suction cup, 22.5mm diameter, Silicone	2.33	KPS8-S
	Customized suction cup, 22.5mm diameter, White silicone	2.34	KPS8-WS
	Customized suction cup, 22.5mm diameter, White silicone (FDA)	2.34	KPS8-WS(FDA)
	Customized suction cup, 22.5mm diameter, High temperature silicone	2.39	KPS8-HS

Dimension

[Unit : mm]



SUCTION CUPS / VMECA Customized

KPS-9



Features and Strengths

Developed to be used specially for bag opening application
Suitable to be used in thin plastic and film type material

Examples of use

Plastic bag opening, Thin Film Material, Paper Bag Handling



Recommended Lifting Force (Max.)

Model	Volume (cm ³)	Lifting Force (Kg) - Perpendicular		
		- 20 kPa	- 60 kPa	- 90 kPa
KPS-9	8.00	1.55	2.80	5.10

※ The lifting force above does not include safety factor

Material Specifications

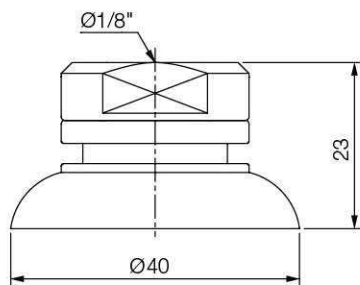
Material	Hardness Shore (°)	Color	Temperature (°C)
NBR	60	Black	-20~110
Silicone	55	Red	-70~200
White Silicone	55	Translucent White	-70~200
White Silicone (FDA)	55	Translucent White	-70~200
High temp. Silicone	50	Blue	-70~280
Conductive Silicone	70	Smoky Black	-45~90
Urethane	60	Dark Green	0~100

Material Resistance

Description	NBR	Silicone	White Silicone	High temp. Silicone	Conductive Silicone	Urethane
Wear Resistance	Excellent	Good	Good	Good	Good	Excellent
Oil	Excellent	Poor	Poor	Poor	Poor	Excellent
Weather / Ozone	Fair	Excellent	Excellent	Excellent	Excellent	Excellent
Alcohol	Good	Good	Good	Good	Good	Fair
Acid	Fair	Poor	Poor	Poor	Poor	Poor

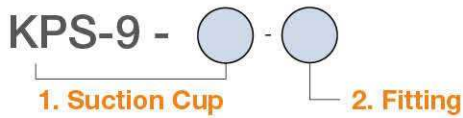
Dimension

[Unit : mm]



[With 18F fitting]

Build an Ordering No.



1. Suction cup	Description	Symbol
	Customized suction cup, 40mm diameter, Nitrile (NBR)	KPS9-N
	Customized suction cup, 40mm diameter, Silicone	KPS9-S
	Customized suction cup, 40mm diameter, White silicone	KPS9-WS
	Customized suction cup, 40mm diameter, White silicone (FDA)	KPS9-WS(FDA)
	Customized suction cup, 40mm diameter, High temperature silicone	KPS9-HS
	Customized suction cup, 40mm diameter, Conductive silicone	KPS9-CS
	Customized suction cup, 40mm diameter, Urethane	KPS9-U

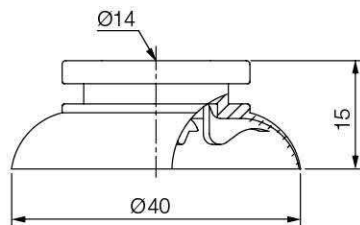
2. Fitting	Description	Symbol
	Fitting, G1/8 female	18F
	Fitting, G1/8 female, Mesh filter	M-18F

Spare Parts – Rubber Parts

Part No.	Description	Weight (g)	Color
KPS9-N	Customized suction cup, 34mm diameter, Nitrile (NBR)	3.85	Black
KPS9-S	Customized suction cup, 34mm diameter, Silicone	3.85	Red
KPS9-WS	Customized suction cup, 34mm diameter, White silicone	3.68	Translucent White
KPS9-WS(FDA)	Customized suction cup, 34mm diameter, White silicone (FDA)	3.68	Translucent White
KPS9-HS	Customized suction cup, 34mm diameter, High temperature silicone	3.92	Blue
KPS9-CS	Customized suction cup, 34mm diameter, Conductive silicone	3.81	Smoky Black
KPS9-U	Customized suction cup, 34mm diameter, Urethane	3.72	Dark Green

Dimension

[Unit : mm]



[Rubber Part]

Spare Parts – Fittings

Part No. (Code No.)	Fitting size	Description	Weight (g)
350 000 3352	18F	G1/8 female	12.65
350 000 4352	18F-F	G1/8 female, Mesh filter	12.85