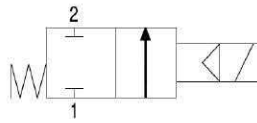


CONTROL VALVES

MS18

Features and Strengths

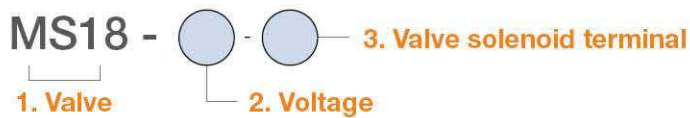
2/2way solenoid valve
 Compact size with high air flow rate
 Easily detachable Pin-type connection



Specifications

Model	MS18
Connection	G1/8"
Normal flow	1,230 NI/m
Pressure range	2.5 ~ 7 bar
Temperature range	-18 ~ 65 °C
Material	NYLON, AL, SUM, Ni, SS, CuZn, NBR, PPS
Standard voltage	AC : 110V, 220V – 50/60Hz DC : 24V
Power consumption	0.85 ~ 1.3W
Weight	25g

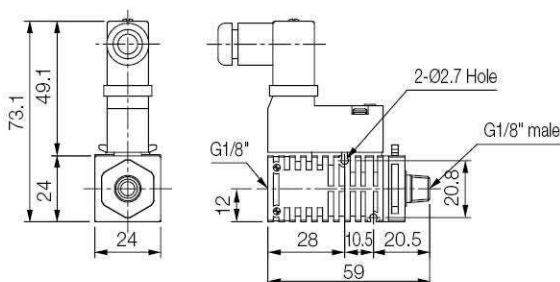
Build an Ordering No.



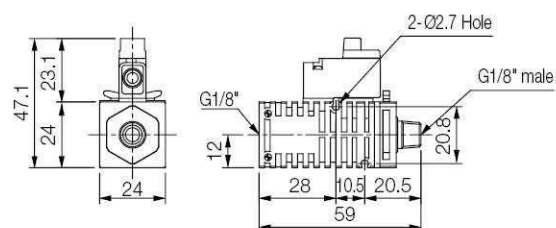
1. Valve	Description	Ordering No.
	2/2 way solenoid valve, G1/8" female inlet	MS18
	2/2 way solenoid valve, G1/8" male inlet	MS18M
	2/2 way solenoid valve, Non plug	MS18C
2. Voltage	Description	Ordering No.
	AC110V	1
	AC220V	2
	DC24V	3
3. Valve terminal	Description	Ordering No.
	Solenoid Terminal, DIN, No LW	1
	Solenoid Terminal, DIN, Lamp, No LW	2
	Solenoid Terminal, Conn, Lamp & 0.3m LW: <i>Only available with DC24V</i>	3

Dimensions

[Unit : mm]



[DIN type]

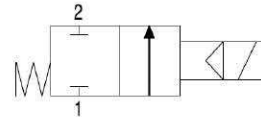


[Connector type]

VMS14

Features and Strengths

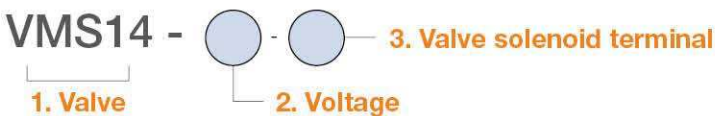
2/2way solenoid valve
Compact size with high air flow rate



Specifications

Model	VMS14
Connection	G1/4"
Normal flow	1410 NI/m
Pressure range	2.5 ~ 7 bar
Temperature range	-18 ~ 65 °C
Material	Nylon, AL, SUM, Ni, SS, CuZn, NBR, PPS
Standard voltage	AC : 110V, 220V – 50/60Hz DC : 24V
Power consumption	0.85 ~ 1.3W
Weight	80

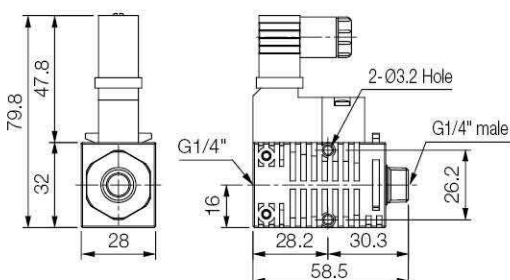
Build an Ordering No.



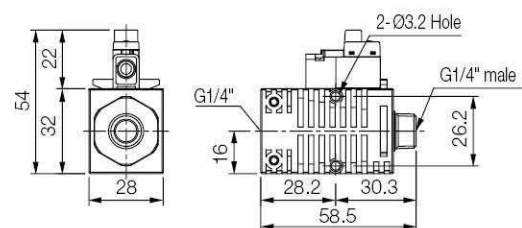
1. Valve	Description	Ordering No.
	2/2 way solenoid valve, G1/4" female inlet	VMS14
	2/2 way solenoid valve, G1/4" male inlet	VMS14M
	2/2 way solenoid valve, Non plug	VMS14C
2. Voltage	Description	Ordering No.
	AC110V	1
	AC220V	2
	DC24V	3
3. Valve terminal	Description	Ordering No.
	Solenoid Terminal, DIN, No LW	1
	Solenoid Terminal, DIN, Lamp, No LW	2
	Solenoid Terminal, Conn, Lamp & 0.3m LW : <i>Only available with DC24V</i>	3

Dimensions

[Unit : mm]



[DIN type]



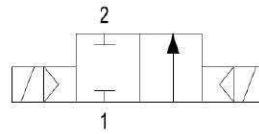
[Connector type]

CONTROL VALVES

VMS14D

Features and Strengths

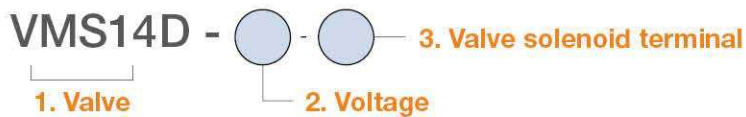
2/2way double solenoid valve
Compact size with high air flow rate



Specifications

Model	VMS14D
Connection	Inlet : G3/8" Outlet : G1/4"
Normal flow	1430 NI/m
Pressure range	2 ~ 7 bar
Temperature range	-18 ~ 65 °C
Material	AL, BS, NBR, POM, PPS, SS
Standard voltage	AC : 110V, 220V – 50/60Hz DC : 24V
Power consumption	2.3W
Weight	321

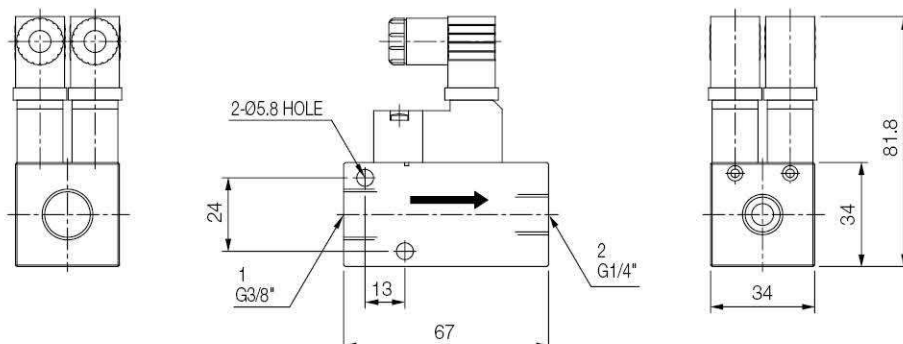
Build an Ordering No.



1. Valve	Description	Ordering No.
	2/2 way solenoid valve, G3/8" female inlet, G1/4" female outlet	VMS14D
2. Voltage	Description	Ordering No.
	AC110V	1
	AC220V	2
	DC24V	3
3. Valve terminal	Description	Ordering No.
	Solenoid Terminal, DIN, No LW	1
	Solenoid Terminal, DIN, Lamp, No LW	2
	Solenoid Terminal, Conn, Lamp & 0.3m LW : <i>Only available with DC24V</i>	3

Dimensions

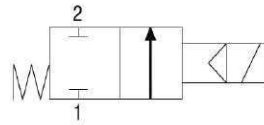
[Unit : mm]



VMS38

Features and Strengths

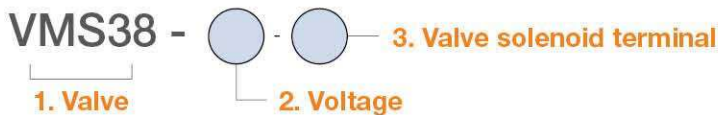
2/2way solenoid valve
Compact size with high air flow rate



Specifications

Model	VMS38
Connection	G3/8"
Normal flow	1590 NI/m
Pressure range	2.5 ~ 7 bar
Temperature range	-18 ~ 65 °C
Material	Ni, Al, SS, POM, CuZn, NBR, PPS
Standard voltage	AC : 110V, 220V – 50/60Hz DC : 24V
Power consumption	1.3W
Weight	220 g

Build an Ordering No.



1. Valve	Description	Ordering No.
	2/2 way solenoid valve, G3/8" female inlet	VMS38
2. Voltage	Description	Ordering No.
	AC110V	1
	AC220V	2
	DC24V	3
3. Valve terminal	Description	Ordering No.
	Solenoid Terminal, DIN, No LW	1
	Solenoid Terminal, DIN, Lamp, No LW	2

Dimensions

[Unit : mm]

