

# SPECIAL GRIPPERS / Floating Suction Cup

## NF20

### Features and Strengths

Integrated with multi-stage vacuum generator  
Large vacuum flow and powerful suction force in non-contact handling

### Examples of use

Circuit boards, Solar cells, PCB boards, Wafer, Food, Paper  
Film, CDs and DVDs



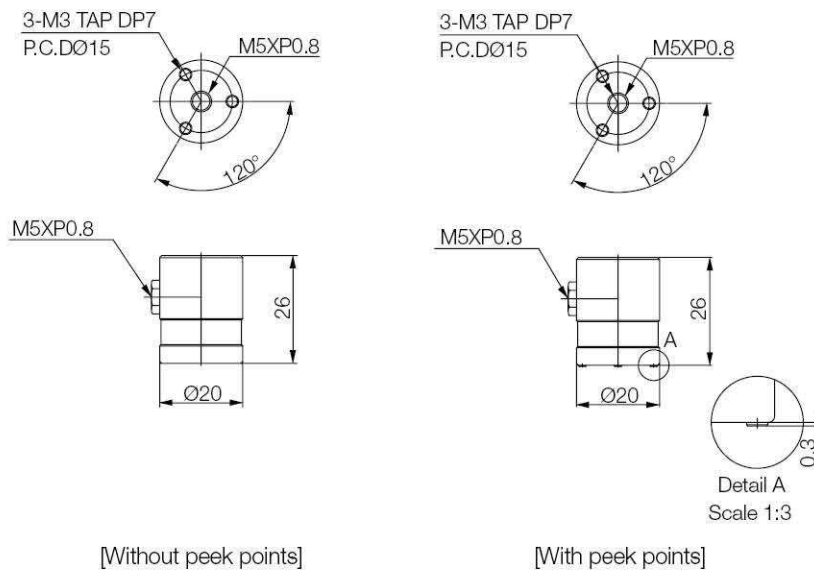
### Recommended Lifting Force (Max.)

Model	Operating Pressure (bar)	Air Consumption (NI/min)			Lifting Force (Kg) – Perpendicular		
		4bar	5bar	6bar	4bar	5bar	6bar
NF20-06	4~6	58	67	78	0.16	0.19	0.21
NF20-12	4~6	116	135	154	0.19	0.25	0.35

※ The lifting force above does not include safety factor

### Dimension

[ Unit : mm ]



## I Build an Ordering No.

NF20 - ○○ - ○○ - ○○ - M5F

: Pre-mounted fitting

**1. Suction Cup**

1. Suction cup	Description	Weight (g)	Symbol
	Floating suction cup, 20mm diameter, Aluminum, Fitting, M5xP0.8 female fitting	19.1	NF20-06-A-M5F
	Floating suction cup, 20mm diameter, Peek, M5xP0.8 female fitting	11.32	NF20-06-P-M5F
	Floating suction cup, 20mm diameter, Large flow, Aluminum, M5xP0.8 female fitting	19.03	NF20-12-A-M5F
	Floating suction cup, 20mm diameter, Large flow, Peek, M5xP0.8 female fitting	11.4	NF20-12-P-M5F
	Floating suction cup, 20mm diameter, 4-Peek points, Aluminum, M5xP0.8 female fitting	19.5	NF20-06-4P-M5F
	Floating suction cup, 20mm diameter, 4-Peek points, Peek, M5xP0.8 female fitting	11.5	NF20-06-P-4P-M5F
	Floating suction cup, 20mm diameter, Large flow, 4-Peek points, Aluminum, M5xP0.8 female fitting	19.6	NF20-12-4P-M5F
	Floating suction cup, 20mm diameter, Large flow, 4-Peek points, Peek, M5xP0.8 female fitting	11.54	NF20-12-P-4P-M5F

# SPECIAL GRIPPERS / Floating Suction Cup

## NF40

### Features and Strengths

Integrated with multi-stage vacuum generator  
Large vacuum flow and powerful suction force in non-contact handling

### Examples of use

Circuit boards, Solar cells, PCB boards, Wafer, Food, Paper  
Film, CDs and DVDs



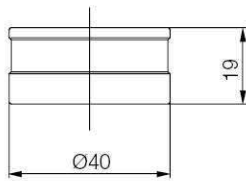
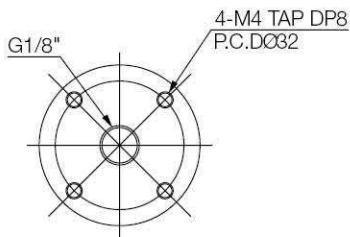
### Recommended Lifting Force (Max.)

Model	Operating Pressure (bar)	Air Consumption (NI/min)			Lifting Force (Kg) – Perpendicular		
		4bar	5bar	6bar	4bar	5bar	6bar
NF40-06	4~6	58	67	78	0.29	0.39	0.49
NF40-12	4~6	116	135	154	0.49	0.59	0.68

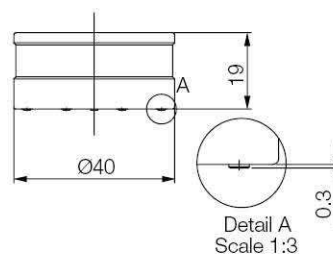
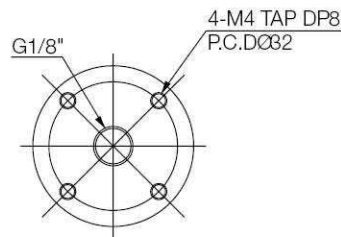
※ The lifting force above does not include safety factor

### Dimension

[ Unit : mm ]



[Without peek points]



[With peek points]

## I Build an Ordering No.

NF40 - ○○ - ○ - ○○ - 18F

: Pre-mounted fitting

**1. Suction Cup**

1. Suction cup	Description	Weight (g)	Symbol
	Floating suction cup, 40mm diameter, Aluminum, Fitting, G1/8 female fitting	54.75	NF40-06-A-18F
	Floating suction cup, 40mm diameter, Peek, G1/8 female fitting	29.2	NF40-06-P-18F
	Floating suction cup, 40mm diameter, Large flow, Aluminum, G1/8 female fitting	54.68	NF40-12-A-18F
	Floating suction cup, 40mm diameter, Large flow, Peek, G1/8 female fitting	29.17	NF40-12-P-18F
	Floating suction cup, 40mm diameter, 9-Peek points, Aluminum, G1/8 female fitting	54.42	NF40-06-9P-18F
	Floating suction cup, 40mm diameter, 9-Peek points, Peek, G1/8 female fitting	30.1	NF40-06-P-9P-18F
	Floating suction cup, 40mm diameter, Large flow, 9-Peek points, Aluminum, G1/8 female fitting	54.37	NF40-12-9P-18F
	Floating suction cup, 40mm diameter, Large flow, 9-Peek points, Peek, G1/8 female fitting	30.15	NF40-12-P-9P-18F

# SPECIAL GRIPPERS / Floating Suction Cup

## NF60

### Features and Strengths

Integrated with multi-stage vacuum generator  
 Large vacuum flow and powerful suction force in non-contact handling

### Examples of use

Circuit boards, Solar cells, PCB boards, Wafer, Food, Paper  
 Film, CDs and DVDs



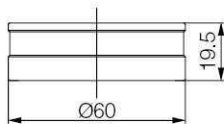
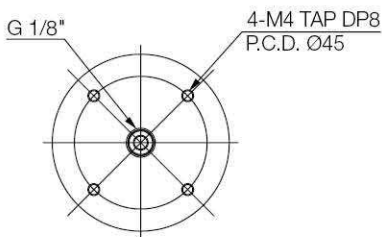
### Recommended Lifting Force (Max.)

Model	Operating Pressure (bar)	Air Consumption (NI/min)			Lifting Force (Kg) – Perpendicular		
		4bar	5bar	6bar	4bar	5bar	6bar
NF60-06	4~6	105	123	126	0.59	0.79	0.89
NF60-12	4~6	160	190	223	0.99	1.25	1.49

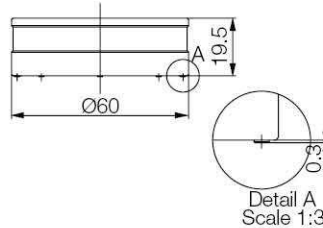
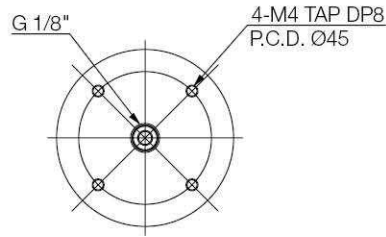
※ The lifting force above does not include safety factor

### Dimension

[ Unit : mm ]



[Without peek points]



[With peek points]

## I Build an Ordering No.

NF60 - ○○ - ○ - ○○ - 18F

: Pre-mounted fitting

**1. Suction Cup**

1. Suction cup	Description	Weight (g)	Symbol
	Floating suction cup, 60mm diameter, Aluminum, Fitting, G1/8 female fitting	130.1	NF60-06-A-18F
	Floating suction cup, 60mm diameter, Peek, G1/8 female fitting	62.22	NF60-06-P-18F
	Floating suction cup, 60mm diameter, Large flow, Aluminum, G1/8 female fitting	129.6	NF60-12-A-18F
	Floating suction cup, 60mm diameter, Large flow, Peek, G1/8 female fitting	62.47	NF60-12-P-18F
	Floating suction cup, 60mm diameter, 9-Peek points, Aluminum, G1/8 female fitting	130.25	NF60-06-9P-18F
	Floating suction cup, 60mm diameter, 9-Peek points, Peek, G1/8 female fitting	62.37	NF60-06-P-9P-18F
	Floating suction cup, 60mm diameter, Large flow, 9-Peek points, Aluminum, G1/8 female fitting	129.75	NF60-12-9P-18F
	Floating suction cup, 60mm diameter, Large flow, 9-Peek points, Peek, G1/8 female fitting	62.62	NF60-12-P-9P-18F