

SUCTION CUPS / Sponge

VS30x80

Features and Strengths

Excellent performance for rough and uneven surfaces

Examples of use

Marbles, Paving Slabs, Bricks, Rough Wood, Masonry



Recommended Lifting Force (Max.)

| Model | Volume(cm ³) | Lifting Force (Kg) - Perpendicular | | |
|---------|--------------------------|------------------------------------|----------|----------|
| | | - 20 kPa | - 60 kPa | - 90 kPa |
| VS30x80 | 43.00 | 2.70 | 9.10 | 14.00 |

※ The lifting force above does not include safety factor

Material Specifications

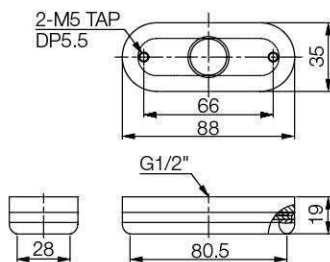
| Material | Hardness Shore (°) | Color | Temperature (°C) |
|----------|--------------------|-------|------------------|
| EPDM | 40° | Black | 0~150 |

Material Resistance

| Description | EPDM |
|-----------------|-----------|
| Wear Resistance | Fair |
| Oil | Poor |
| Weather / Ozone | Excellent |
| Alcohol | Excellent |
| Acid | Poor |

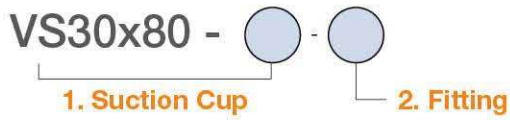
Dimension

[Unit : mm]



[With 12F fitting]

Build an Ordering No.



| 1. Suction cup | Description | Symbol |
|----------------|--|-----------|
| | Sponge suction cup, 30x80mm diameter, EPDM | VS30x80-E |
| 2. Fitting | Description | Symbol |
| | Fitting, G1/2 female | 12F |

Spare Parts – Rubber Part

| Part No. | Description | Weight (g) | Color |
|-----------|---------------------|------------|-------|
| VS30x80-E | EPDM Perimeter Seal | 9.2 | Black |

Spare Parts – Fittings

| Part No. (Code No.) | Fitting size | Description | Weight (g) |
|---------------------|--------------|-------------|------------|
| 350 001 3611 | 12F | G1/2 female | 63.1 |

SUCTION CUPS / Sponge

VS35

Features and Strengths

Excellent performance for rough and uneven surfaces

Examples of use

Marbles, Paving Slabs, Bricks, Rough Wood, Masonry



Recommended Lifting Force (Max.)

| Model | Volume(cm ³) | Lifting Force (Kg) - Perpendicular | | |
|-------|--------------------------|------------------------------------|----------|----------|
| | | - 20 kPa | - 60 kPa | - 90 kPa |
| VS35 | 6.00 | 2.04 | 5.10 | 7.14 |

※ The lifting force above does not include safety factor

Material Specifications

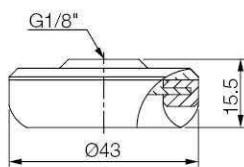
| Material | Hardness Shore (°) | Color | Temperature (°C) |
|----------|--------------------|-------|------------------|
| EPDM | 40° | Black | 0~150 |

Material Resistance

| Description | EPDM |
|-----------------|-----------|
| Wear Resistance | Fair |
| Oil | Poor |
| Weather / Ozone | Excellent |
| Alcohol | Excellent |
| Acid | Poor |

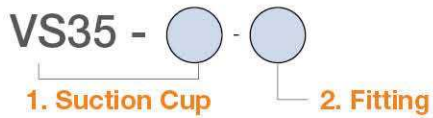
Dimension

[Unit : mm]



[With 18F fitting]

Build an Ordering No.



| 1. Suction cup | Description | Symbol |
|----------------|---|--------|
| | Sponge suction cup, 35mm diameter, EPDM | VS35-E |
| 2. Fitting | Description | Symbol |
| | Fitting, G1/8 female | 18F |
| | Button valve, Fitting, G1/8 female | 18F-BV |

Spare Parts – Rubber Part

| Part No. | Description | Weight (g) | Color |
|----------|---------------------|------------|-------|
| VS35-E | EPDM Perimeter Seal | 5.39 | Black |

Spare Parts – Fittings

| Part No. (Code No.) | Fitting size | Description | Weight (g) |
|---------------------|--------------|---------------------------|------------|
| 350 001 3311 | 18F | G1/8 female | 17.81 |
| 350 021 3311 | 18F-BV | Button valve, G1/8 female | 41.17 |

SUCTION CUPS / Sponge

VS60

Features and Strengths

Excellent performance for rough and uneven surfaces

Examples of use

Marbles, Paving Slabs, Bricks, Rough Wood, Masonry



Recommended Lifting Force (Max.)

| Model | Volume(cm ³) | Lifting Force (Kg) - Perpendicular | | |
|-------|--------------------------|------------------------------------|----------|----------|
| | | - 20 kPa | - 60 kPa | - 90 kPa |
| VS60 | 20.00 | 6.12 | 15.30 | 22.44 |

※ The lifting force above does not include safety factor

Material Specifications

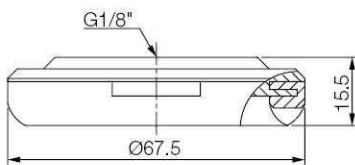
| Material | Hardness Shore (°) | Color | Temperature (°C) |
|----------|--------------------|-------|------------------|
| EPDM | 40° | Black | 0~150 |

Material Resistance

| Description | EPDM |
|-----------------|-----------|
| Wear Resistance | Fair |
| Oil | Poor |
| Weather / Ozone | Excellent |
| Alcohol | Excellent |
| Acid | Poor |

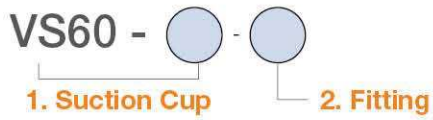
Dimension

[Unit : mm]



[With 18F fitting]

Build an Ordering No.



| 1. Suction cup | Description | Symbol |
|----------------|---|--------|
| | Sponge suction cup, 60mm diameter, EPDM | VS60-E |

| 2. Fitting | Description | Symbol |
|------------|------------------------------------|--------|
| | Fitting, G1/8 female | 18F |
| | Button valve, Fitting, G1/8 female | 18F-BV |

Spare Parts – Rubber Part

| Part No. | Description | Weight (g) | Color |
|----------|---------------------|------------|-------|
| VS60-E | EPDM Perimeter Seal | 9.4 | Black |

Spare Parts – Fittings

| Part No. (Code No.) | Fitting size | Description | Weight (g) |
|---------------------|--------------|---------------------------|------------|
| 350 001 3312 | 18F | G1/8 female | 47.57 |
| 350 021 3312 | 18F-BV | Button valve, G1/8 female | 70.92 |

SUCTION CUPS / Sponge

VS100

Features and Strengths

Excellent performance for rough and uneven surfaces

Examples of use

Marbles, Paving Slabs, Bricks, Rough Wood, Masonry



Recommended Lifting Force (Max.)

| Model | Volume(cm ³) | Lifting Force (Kg) - Perpendicular | | |
|-------|--------------------------|------------------------------------|----------|----------|
| | | - 20 kPa | - 60 kPa | - 90 kPa |
| VS100 | 55.00 | 18.36 | 45.90 | 67.34 |

※ The lifting force above does not include safety factor

Material Specifications

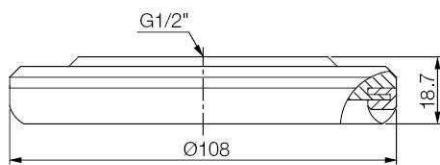
| Material | Hardness Shore (°) | Color | Temperature (°C) |
|----------|--------------------|-------|------------------|
| EPDM | 40° | Black | 0~150 |

Material Resistance

| Description | EPDM |
|-----------------|-----------|
| Wear Resistance | Fair |
| Oil | Poor |
| Weather / Ozone | Excellent |
| Alcohol | Excellent |
| Acid | Poor |

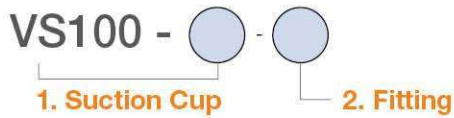
Dimension

[Unit : mm]



[With 12F fitting]

Build an Ordering No.



| 1. Suction cup | Description | Symbol |
|----------------|--|---------|
| | Sponge suction cup, 100mm diameter, EPDM | VS100-E |
| 2. Fitting | Description | Symbol |
| | Fitting, G1/2 female | 12F |
| | Button valve, Fitting, G1/2 female | 12F-BV |

Spare Parts – Rubber Part

| Part No. | Description | Weight (g) | Color |
|----------|---------------------|------------|-------|
| VS100-E | EPDM Perimeter Seal | 16.43 | Black |

Spare Parts – Fittings

| Part No. (Code No.) | Fitting size | Description | Weight (g) |
|---------------------|--------------|---------------------------|------------|
| 350 001 3623 | 12F | G1/2 female | 222.99 |
| 350 021 3623 | 12F-BV | Button valve, G1/2 female | 338.53 |

SUCTION CUPS / Sponge

VS150

Features and Strengths

Excellent performance for rough and uneven surfaces

Examples of use

Marbles, Paving Slabs, Bricks, Rough Wood, Masonry



Recommended Lifting Force (Max.)

| Model | Volume(cm ³) | Lifting Force (Kg) - Perpendicular | | |
|-------|--------------------------|------------------------------------|----------|----------|
| | | - 20 kPa | - 60 kPa | - 90 kPa |
| VS150 | 125.00 | 38.00 | 97.00 | 138.00 |

※ The lifting force above does not include safety factor

Material Specifications

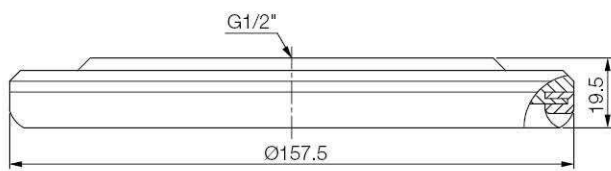
| Material | Hardness Shore (°) | Color | Temperature (°C) |
|----------|--------------------|-------|------------------|
| EPDM | 40° | Black | 0~150 |

Material Resistance

| Description | EPDM |
|-----------------|-----------|
| Wear Resistance | Fair |
| Oil | Poor |
| Weather / Ozone | Excellent |
| Alcohol | Excellent |
| Acid | Poor |

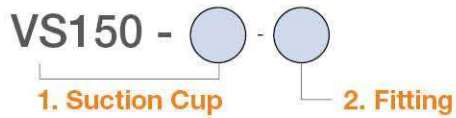
Dimension

[Unit : mm]



[With 12F fitting]

Build an Ordering No.



| 1. Suction cup | Description | Symbol |
|----------------|---|---------|
| | Sponge suction cup, 150mm diameter, EPDM, | VS150-E |

| 2. Fitting | Description | Symbol |
|------------|------------------------------------|--------|
| | Fitting, G1/2 female | 12F |
| | Button valve, Fitting, G1/2 female | 12F-BV |

Spare Parts – Rubber Part

| Part No. | Description | Weight (g) | Color |
|----------|---------------------|------------|-------|
| VS150-E | EPDM Perimeter Seal | 25 | Black |

Spare Parts – Fittings

| Part No. (Code No.) | Fitting size | Description | Weight (g) |
|---------------------|--------------|---------------------------|------------|
| 350 001 3615 | 12F | G1/2 female | 525 |
| 350 021 3615 | 12F-BV | Button valve, G1/2 female | 640.54 |

SUCTION CUPS / Sponge

VS200

Features and Strengths

Excellent performance for rough and uneven surfaces

Examples of use

Marbles, Paving Slabs, Bricks, Rough Wood, Masonry



Recommended Lifting Force (Max.)

| Model | Volume(cm ³) | Lifting Force (Kg) - Perpendicular | | |
|-------|--------------------------|------------------------------------|----------|----------|
| | | - 20 kPa | - 60 kPa | - 90 kPa |
| VS200 | 543.00 | 76.53 | 193.87 | 275.51 |

※ The lifting force above does not include safety factor

Material Specifications

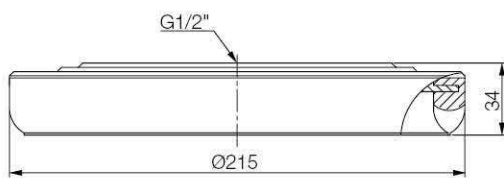
| Material | Hardness Shore (°) | Color | Temperature (°C) |
|----------|--------------------|-------|------------------|
| EPDM | 40° | Black | 0~150 |

Material Resistance

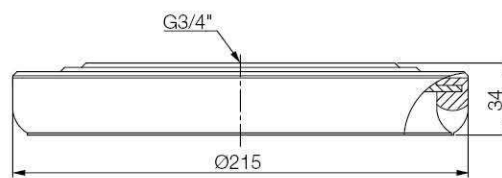
| Description | EPDM |
|-----------------|-----------|
| Wear Resistance | Fair |
| Oil | Poor |
| Weather / Ozone | Excellent |
| Alcohol | Excellent |
| Acid | Poor |

Dimension

[Unit : mm]

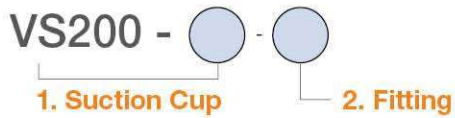


[With 12F fitting]



[With 34F fitting]

Build an Ordering No.



| 1. Suction cup | Description | Symbol |
|----------------|--|---------|
| | Sponge suction cup, 200mm diameter, EPDM | VS200-E |

| 2. Fitting | Description | Symbol |
|------------|----------------------|--------|
| | Fitting, G1/2 female | 12F |
| | Fitting, G3/4 female | 34F |

Spare Parts – Rubber Part

| Part No. | Description | Weight (g) | Color |
|----------|---------------------|------------|-------|
| VS200-E | EPDM Perimeter Seal | 176.66 | Black |

Spare Parts – Fittings

| Part No. (Code No.) | Fitting size | Description | Weight (g) |
|---------------------|--------------|-------------|------------|
| 350 001 3616 | 12F | G1/2 female | 1015 |
| 350 001 3716 | 34F | G3/4 female | 1015 |

SUCTION CUPS / Sponge

VS300

Features and Strengths

Excellent performance for rough and uneven surfaces

Examples of use

Marbles, Paving Slabs, Bricks, Rough Wood, Masonry



Recommended Lifting Force (Max.)

| Model | Volume(cm ³) | Lifting Force (Kg) - Perpendicular | | |
|-------|--------------------------|------------------------------------|----------|----------|
| | | - 20 kPa | - 60 kPa | - 90 kPa |
| VS300 | 1285.00 | 163.26 | 438.77 | 653.06 |

※ The lifting force above does not include safety factor

Material Specifications

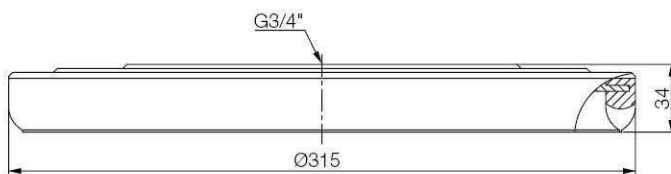
| Material | Hardness Shore (°) | Color | Temperature (°C) |
|----------|--------------------|-------|------------------|
| EPDM | 40° | Black | 0~150 |

Material Resistance

| Description | EPDM |
|-----------------|-----------|
| Wear Resistance | Fair |
| Oil | Poor |
| Weather / Ozone | Excellent |
| Alcohol | Excellent |
| Acid | Poor |

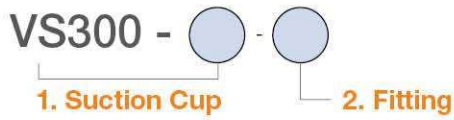
Dimension

[Unit : mm]



[With 34F fitting]

I Build an Ordering No.



| 1. Suction cup | Description | Symbol |
|----------------|--|---------|
| | Sponge suction cup, 300mm diameter, EPDM | VS300-E |
| 2. Fitting | Description | Symbol |
| | Fitting, G3/4 female | 34F |

I Spare Parts – Rubber Part

| Part No. | Description | Weight (g) | Color |
|----------|---------------------|------------|-------|
| VS300-E | EPDM Perimeter Seal | 265 | Black |

I Spare Parts – Fittings

| Part No. (Code No.) | Fitting size | Description | Weight (g) |
|---------------------|--------------|-------------|------------|
| 350 001 3717 | 34F | G3/4 female | 2303 |

SUCTION CUPS / Sponge

VS400

Features and Strengths

Excellent performance for rough and uneven surfaces

Examples of use

Marbles, Paving Slabs, Bricks, Rough Wood, Masonry



Recommended Lifting Force (Max.)

| Model | Volume(cm ³) | Lifting Force (Kg) - Perpendicular | | |
|-------|--------------------------|------------------------------------|----------|----------|
| | | - 20 kPa | - 60 kPa | - 90 kPa |
| VS400 | 2288.00 | 326.00 | 876.00 | 1300.00 |

※ The lifting force above does not include safety factor

Material Specifications

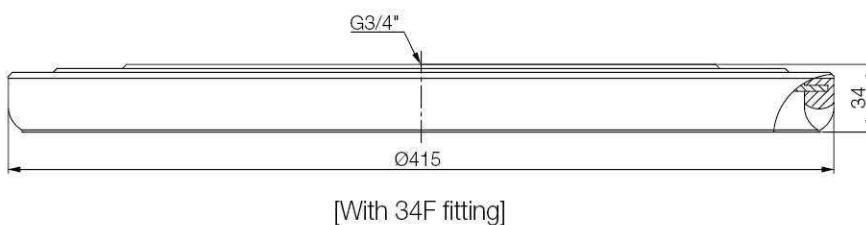
| Material | Hardness Shore (°) | Color | Temperature (°C) |
|----------|--------------------|-------|------------------|
| EPDM | 40° | Black | 0~150 |

Material Resistance

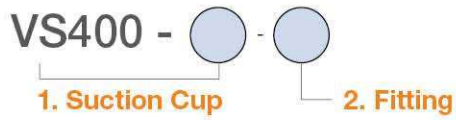
| Description | EPDM |
|-----------------|-----------|
| Wear Resistance | Fair |
| Oil | Poor |
| Weather / Ozone | Excellent |
| Alcohol | Excellent |
| Acid | Poor |

Dimension

[Unit : mm]



Build an Ordering No.



| 1. Suction cup | Description | Symbol |
|----------------|--|---------|
| | Sponge suction cup, 400mm diameter, EPDM | VS400-E |

| 2. Fitting | Description | Symbol |
|------------|----------------------|--------|
| | Fitting, G3/4 female | 34F |

Spare Parts – Rubber Part

| Part No. | Description | Weight (g) | Color |
|----------|---------------------|------------|-------|
| VS400-E | EPDM Perimeter Seal | 350 | Black |

Spare Parts – Fittings

| Part No. (Code No.) | Fitting size | Description | Weight (g) |
|---------------------|--------------|-------------|------------|
| 350 001 3718 | 34F | G3/4 female | 3016 |